

DESIGN DESIGNATION

FUNCTIONAL CLASSIFICATION

COLLECTOR

A.D.T. - 2017 = 4,345

A.D.T. - 2037 = 4,562

INDEX OF SHEETS

DESCRIPTION	SHEET NUMBER
TITLE SHEET	1
TYPICAL SECTIONS	2-3
RIGHT-OF-WAY PLANS	4-13

CONVENTIONAL SYMBOLS

(USED IN PLANS)

	EXISTING	NEW
BUILDINGS AND STRUCTURES		
GUARD RAIL		
CONCRETE RIGHT-OF-WAY MARKER		
STEEL RIGHT-OF-WAY MARKER		
LOCATION SURVEY MARKER		
UTILITIES		
FIBER OPTICS		
OVERHEAD TELEPHONE		
UNDERGROUND TELEPHONE		
OVERHEAD POWER		
UNDERGROUND POWER		
GAS		
WATER		
MANHOLE		
FIRE HYDRANT		
WATER VALVE		
WATER METER		
DROP INLET		
DITCH BLOCK		
GROUND MOUNTED SIGN		
LIGHT POLE		
H-FRAME POWER POLE		
TELEPHONE PEDESTAL		
FENCE		
CHAIN LINK		
WOVEN WIRE		
GATE POST		
BENCHMARK		

NOTE: DASHED OR OPEN SYMBOLS INDICATE EXISTING FEATURES

CITY OF FRONTENAC
10555 CLAYTON ROAD
FRONTENAC, MISSOURI 63131
314-994-3200



APPROVED BY:

MAYOR

DATE

GEYER ROAD – PHASE 1 ROAD IMPROVEMENTS

FRONTENAC, MISSOURI

FEDERAL PROJECT NO. STP-5503(607) TIP #6899-20

RIGHT OF WAY PLANS



PROJECT LIMITS

END OF PROJECT (GEYER RD)	STA	157+25.07
BEGINNING OF PROJECT (GEYER RD)	STA	124+80.00
APPARENT LENGTH (GEYER RD)		3,245.07 FEET
END OF PROJECT (CLAYTON RD)	STA	14+40.00
BEGINNING OF PROJECT (CLAYTON RD)	STA	3+15.00
APPARENT LENGTH (CLAYTON RD)		1,125 FEET
EQUATIONS AND EXCEPTIONS		N/A
TOTAL CORRECTIONS		N/A
NET LENGTH OF PROJECT		4,370.07 FEET

PRELIMINARY PLANS

NOT FOR CONSTRUCTION

DATE

DISCLAIMER OF RESPONSIBILITY

I hereby specify that the documents intended to be authorized by my seal are limited to this sheet, and I hereby disclaim any responsibility for all other Drawings, Specifications, Estimates, Reports or other documents or instruments relating to or intended to be used for any part of the engineering project or survey.

REV	DATE	BY	DESCRIPTION

LOCHMUELLER GROUP
411 N 10TH STREET, SUITE 200
SAINT LOUIS, MISSOURI 63101
P (314) 621-3395 F (314) 621-3288
WWW.LOCHGROUP.COM
MISSOURI STATE ENGINEERING CORPORATION
CERTIFICATE/LICENSE NO. 2002011852

GEYER ROAD PHASE 1
IMPROVEMENTS
COVER SHEET

PROJECT/JOB NO.	STP-5503(607)
MSD PROJECT NO.	-
MSD BASE MAP	20N, 21N, 22N
DATE PREPARED	4/21/2021
SHEET	1 OF 13

PRELIMINARY PLANS

NOT FOR CONSTRUCTION

DATE _____

DISCLAIMER OF RESPONSIBILITY

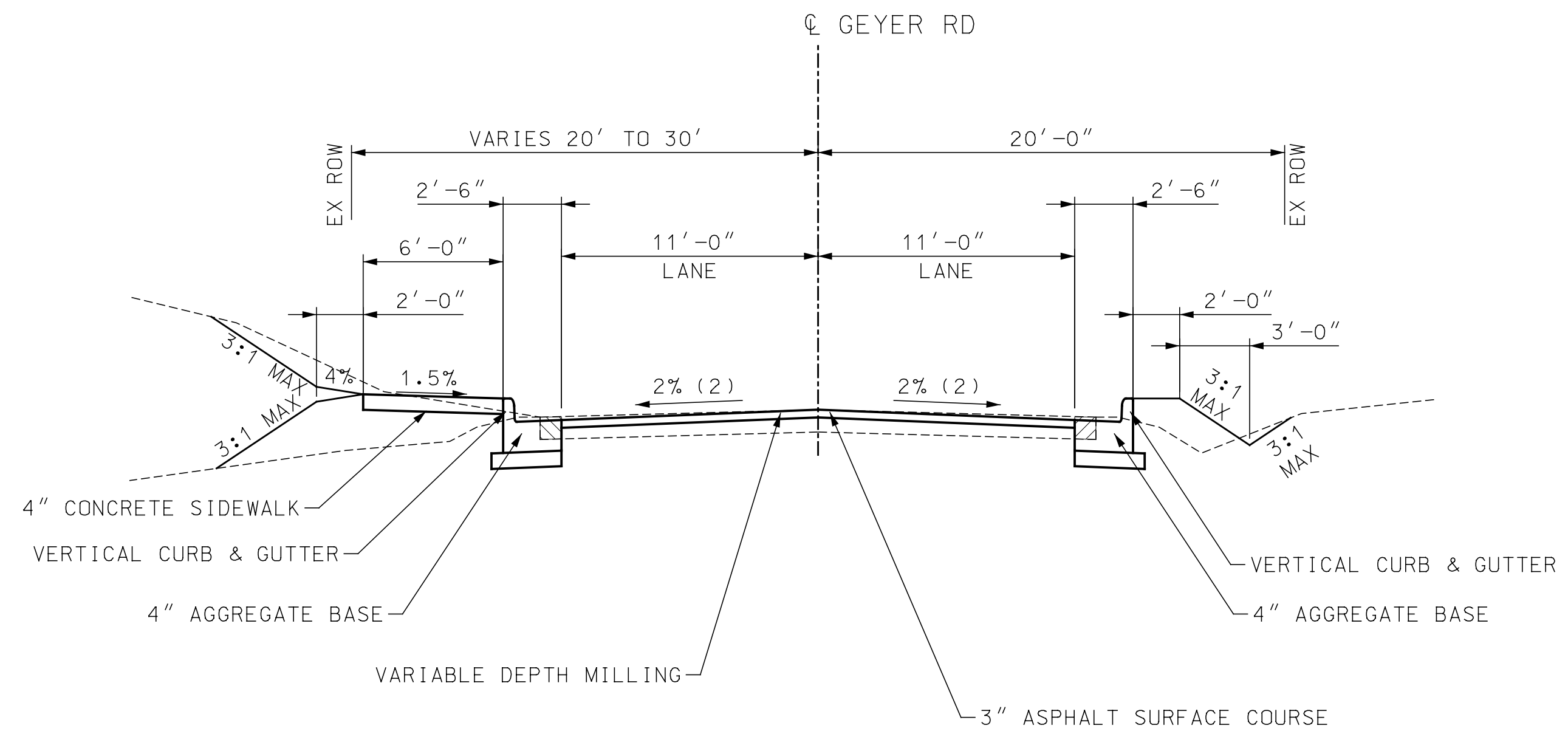
I hereby specify that the documents intended to be authorized by my seal are limited to this sheet, and I hereby disclaim any responsibility for all other Drawings, Specifications, Estimates, Reports or other documents or instruments relating to or intended to be used for any part of the engineering project or survey.

REV	DATE	BY	DESCRIPTION

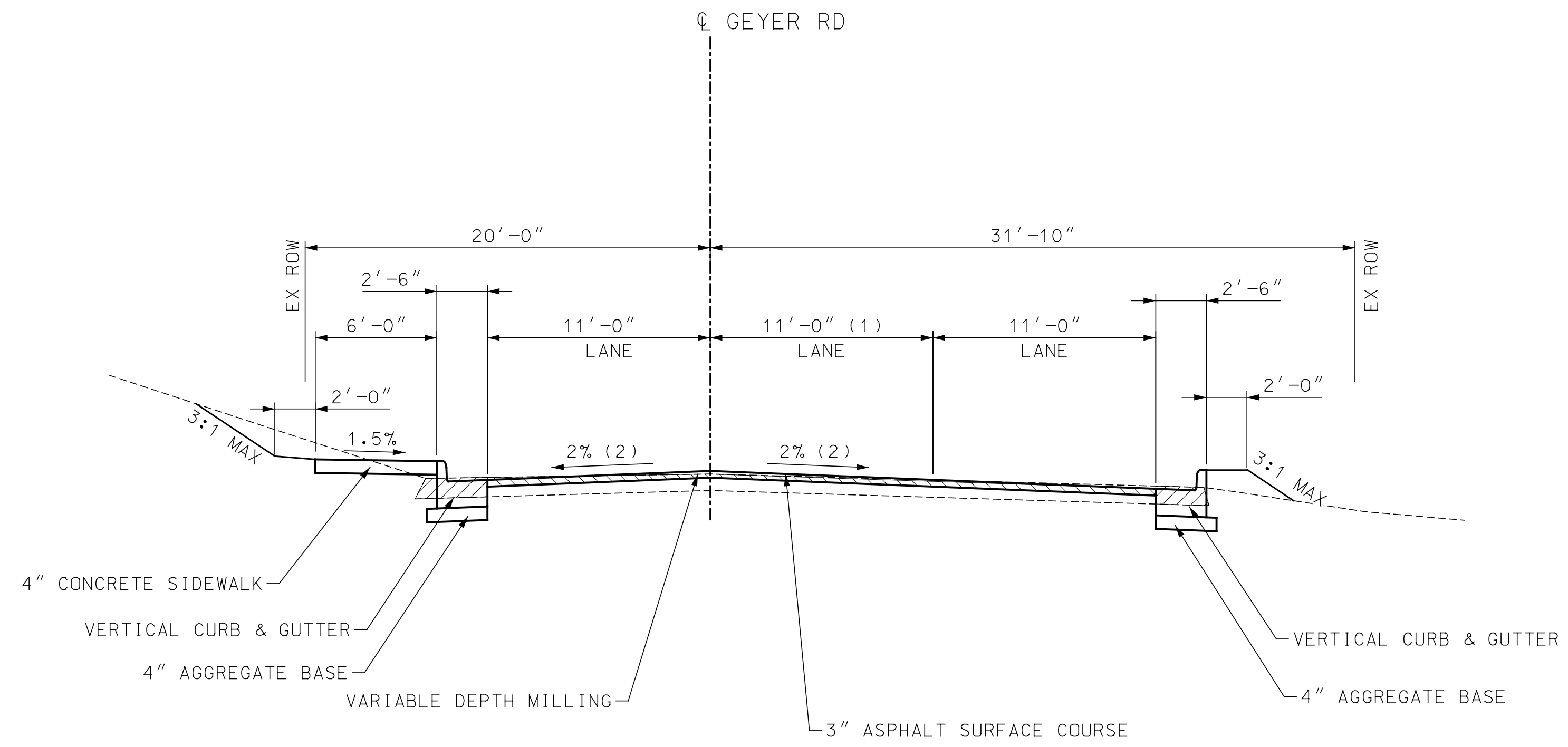
LOCHMUELLER GROUP
 411 N 10TH STREET, SUITE 200
 SAINT LOUIS, MISSOURI 63101
 P (314) 621-3395 F (314) 621-3288
 WWW.LOCHGROUP.COM
 MISSOURI STATE ENGINEERING CORPORATION
 CERTIFICATE/LICENSE NO. 2002011852

GEYER ROAD PHASE I IMPROVEMENTS
 TYPICAL SECTIONS
 SHEET 1 OF 2

PROJECT/JOB NO. STP-5503(607)
MSD PROJECT NO. -
MSD BASE MAP 20N, 21N, 22N
DATE PREPARED 4/21/2021
SHEET 2 OF 13



GEYER ROAD
 STA. 125+00.00 TO STA. 155+10.00



GEYER ROAD
 STA. 155+10.00 TO STA. 157+03.02
 (1) VARIES 0' AT 155+10.00 TO 11' AT 156+20.00

PRELIMINARY PLANS

NOT FOR CONSTRUCTION

DATE

DISCLAIMER OF RESPONSIBILITY

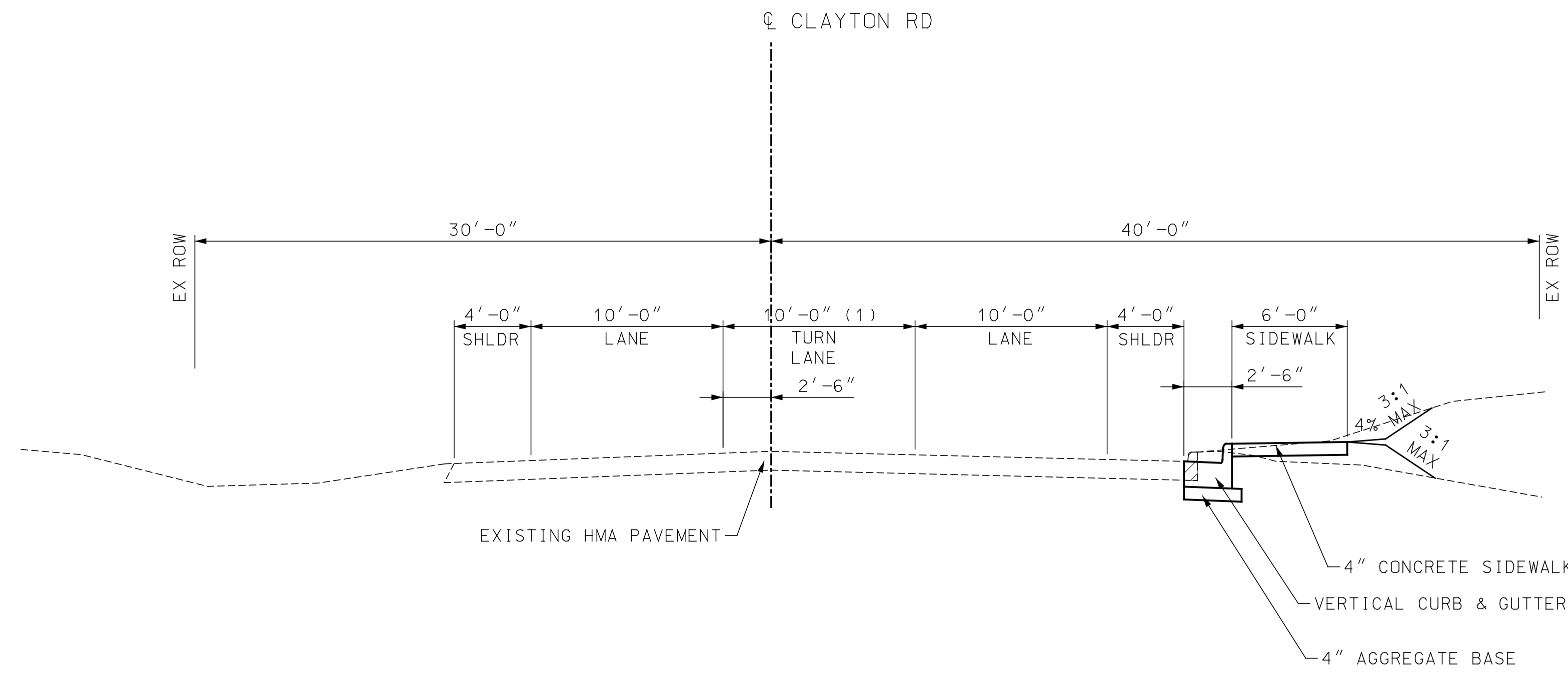
I hereby specify that the documents intended to be authorized by my seal are limited to this sheet, and I hereby disclaim any responsibility for all other Drawings, Specifications, Estimates, Reports or other documents or instruments relating to or intended to be used for any part of the engineering project or survey.

REV	DATE	BY	DESCRIPTION

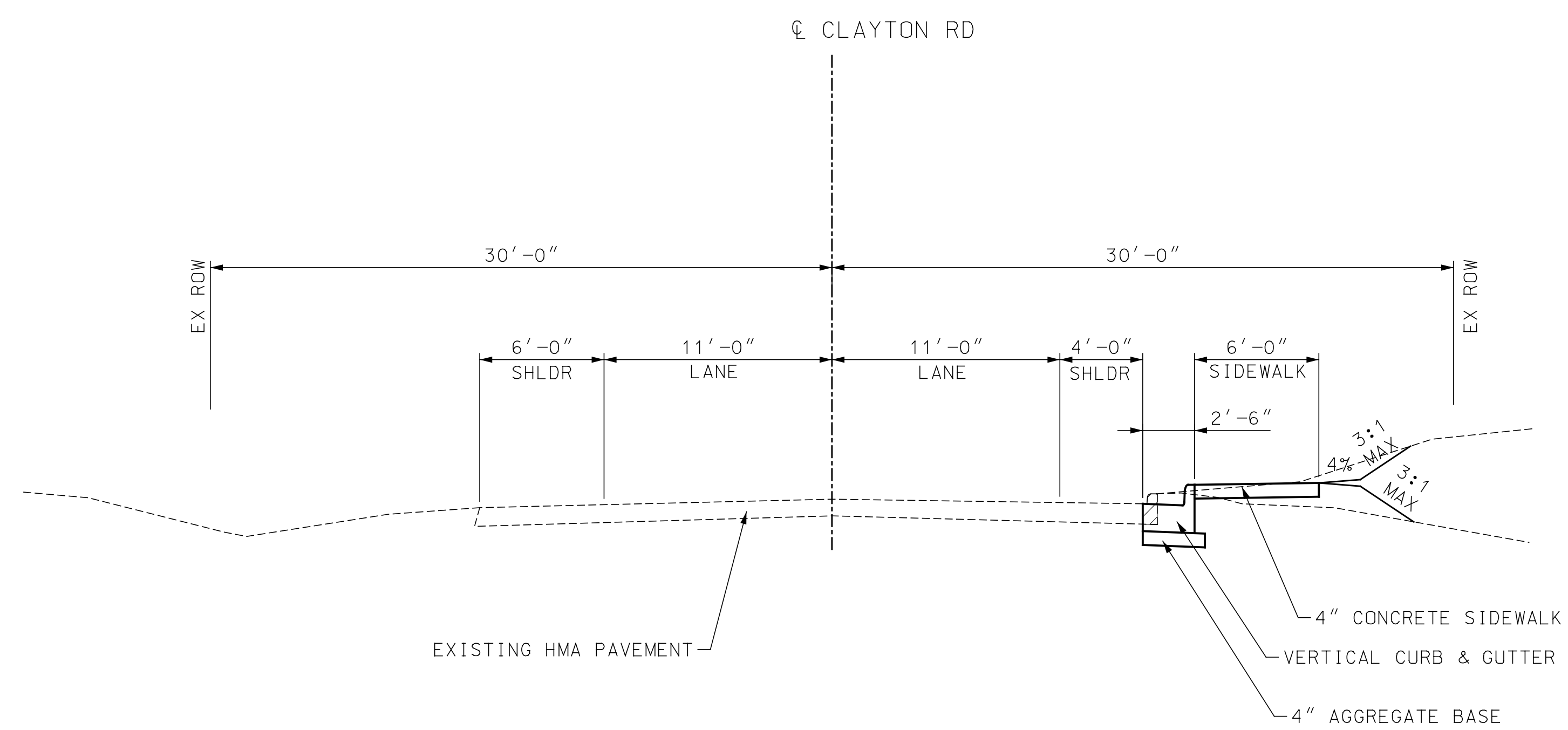
LOCHMUELLER GROUP
 411 N 10TH STREET, SUITE 200
 SAINT LOUIS, MISSOURI 63101
 P (314) 621-3395 F (314) 621-3288
 WWW.LOCHGROUP.COM
 MISSOURI STATE ENGINEERING CORPORATION
 CERTIFICATE/LICENSE NO. 2002011852

GEYER ROAD PHASE I IMPROVEMENTS
 TYPICAL SECTIONS
 SHEET 2 OF 2

PROJECT/JOB NO. STP-5503(607)
MSD PROJECT NO. -
MSD BASE MAP 20N, 21N, 22N
DATE PREPARED 4/21/2021
SHEET 3 OF 13

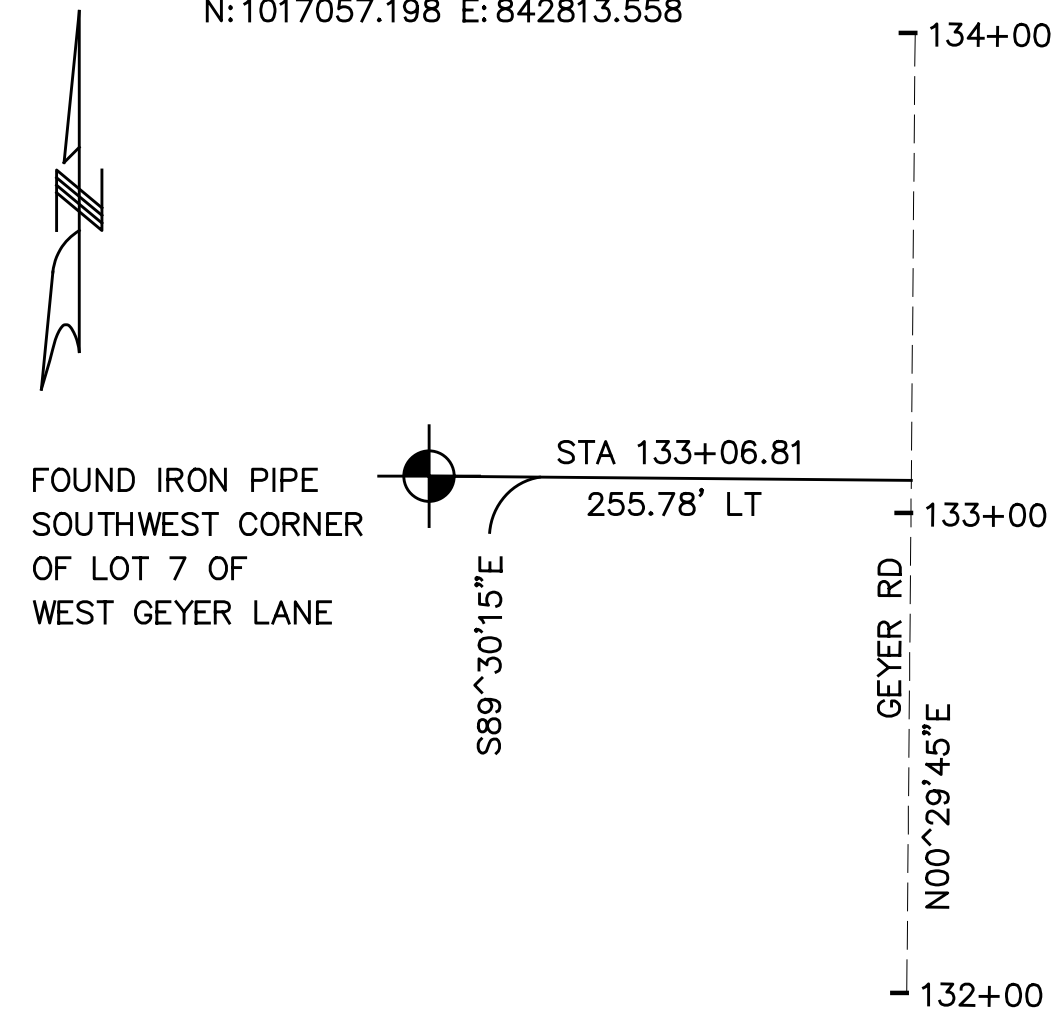


CLAYTON ROAD
 STA. 5+10.00 TO STA. 8+20.00
 (1) VARIES 10' AT 6+25.00 TO 0' AT 8+20.00

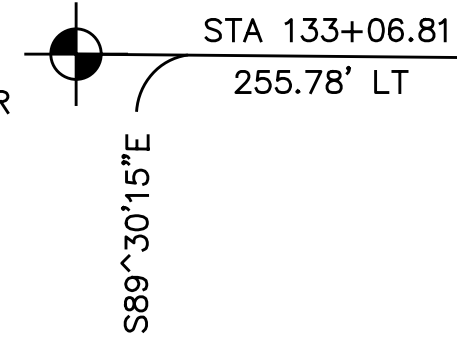


CLAYTON ROAD
 STA. 8+20.00 TO STA. 14+35.00

LAND CORNER TIE:
 IRON PIPE FOUND AT THE SOUTHWEST CORNER OF
 LOT 7 OF WEST GEYER LANE
 PB 35, PG 8 OF THE ST LOUIS COUNTY RECORDERS
 OFFICE, ST LOUIS COUNTY, MISSOURI. 255.85 FEET SOUTHWEST
 OF BASELINE STATION 133+06.81
 PROJECT COORDINATES
 N:1017057.198 E:842813.558



FOUND IRON PIPE
 SOUTHWEST CORNER
 OF LOT 7 OF
 WEST GEYER LANE



LEGEND:

	TEMPORARY EASEMENT
	PERMANENT EASEMENT
	NEW RIGHT OF WAY



MATCHLINE STA 125+20.00

PRELIMINARY PLANS
 NOT FOR CONSTRUCTION
 DATE _____

DISCLAIMER OF RESPONSIBILITY
 I hereby specify that the documents intended to be authorized by my seal are limited to this sheet, and I hereby disclaim any responsibility for all other Drawings, Specifications, Estimates, Reports or other documents or instruments relating to or intended to be used for any part of the engineering project or survey.

REV	DATE	BY	DESCRIPTION

LOCHMUELLER GROUP
 411 N 10TH STREET, SUITE 200
 SAINT LOUIS, MISSOURI 63101
 P (314) 621-3395 F (314) 621-3288
 WWW.LOCHMUELLERGROUP.COM
 MISSOURI STATE ENGINEERING CORPORATION
 CERTIFICATE/LICENSE NO. 2002011852

GEYER ROAD PHASE I IMPROVEMENTS
 RIGHT OF WAY PLAN
 SHEET 1 OF 10

PROJECT/JOB NO. STP-5503(607)
MSD PROJECT NO. -
MSD BASE MAP 20N, 21N, 22N
DATE PREPARED 4/21/2021
SHEET 4 OF 13

PRELIMINARY PLANS

NOT FOR CONSTRUCTION

DATE

DISCLAIMER OF RESPONSIBILITY

I hereby specify that the documents intended to be authorized by my seal are limited to this sheet, and I hereby disclaim any responsibility for all other drawings, specifications, estimates, reports or other documents or instruments relating to or intended to be used for any part of the engineering project or survey.

REV	DATE	BY	DESCRIPTION

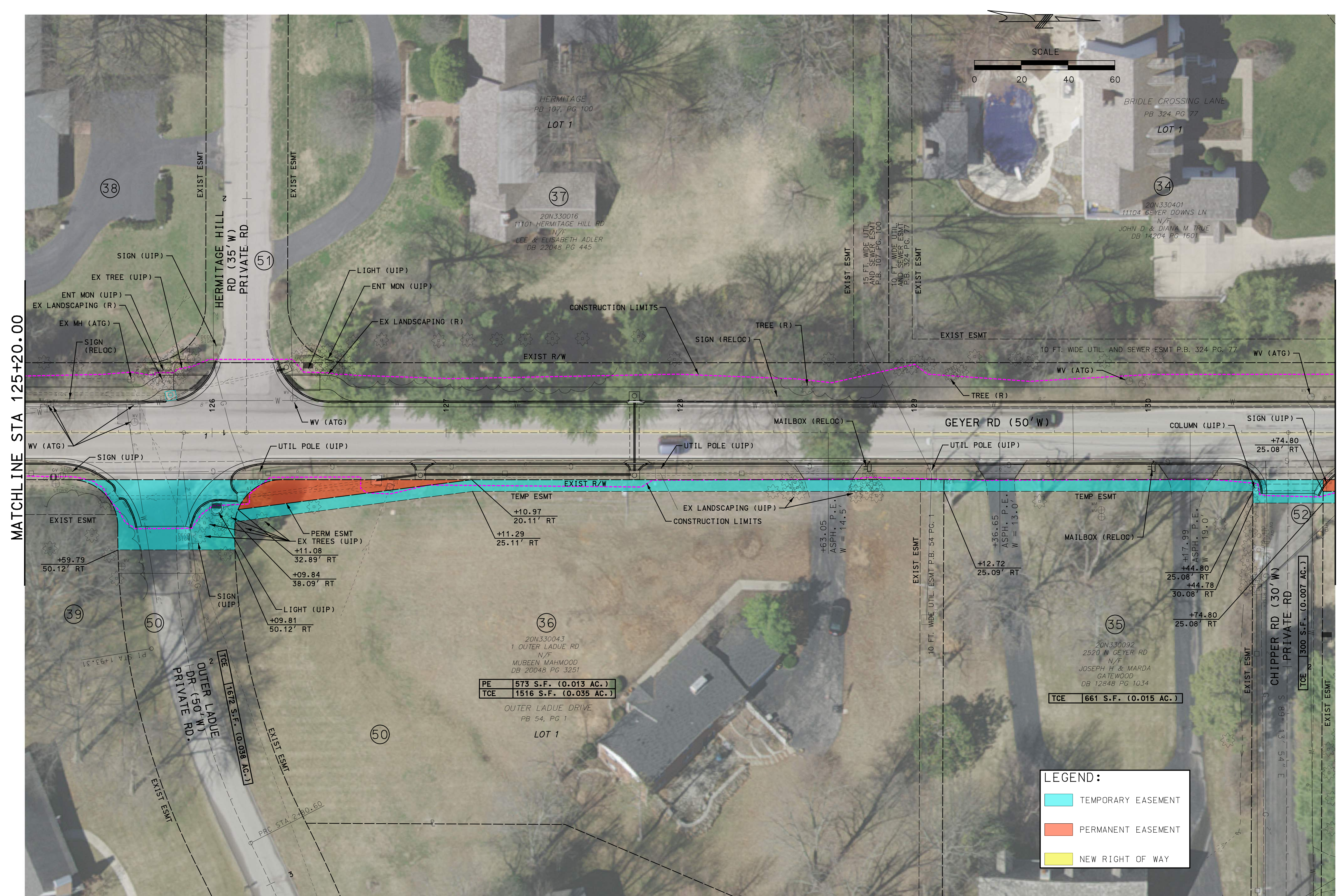
LOCHMUELLER GROUP
 411 N 10TH STREET, SUITE 200
 SAINT LOUIS, MISSOURI 63101
 P (314) 621-3395 F (314) 621-3288
 WWW.LOCHMUELLER.COM
 MISSOURI STATE ENGINEERING CORPORATION
 CERTIFICATE LICENSE NO. 2002011852

GEYER ROAD PHASE I IMPROVEMENTS
 RIGHT OF WAY PLAN
 SHEET 2 OF 10

PROJECT/JOB NO. STP-5503(607)
MSD PROJECT NO. -
MSD BASE MAP 20N, 21N, 22N
DATE PREPARED 4/21/2021
SHEET 5 OF 13

MATCHLINE STA 125+20.00

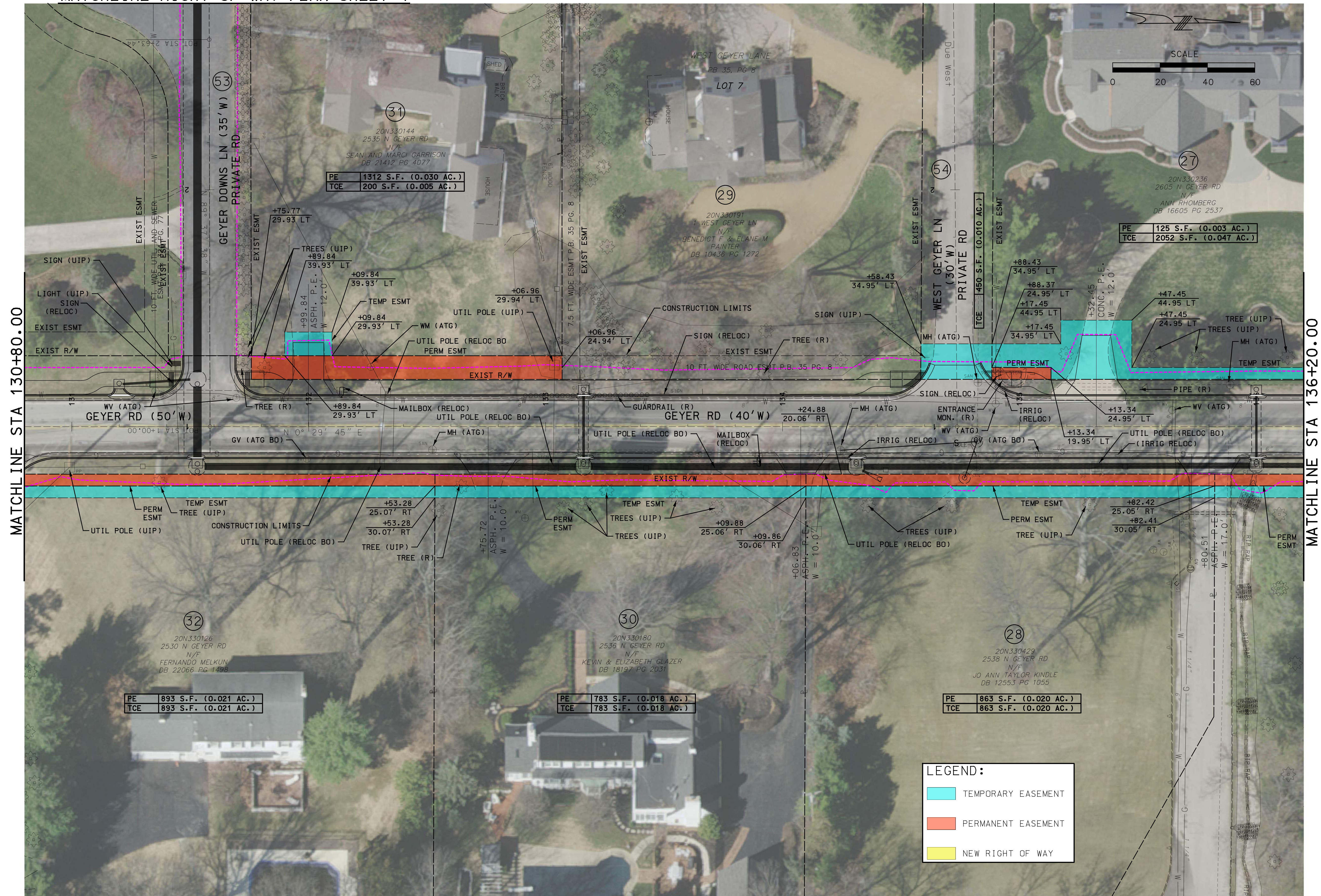
MATCHLINE STA 129+80.00



LEGEND:

 TEMPORARY EASEMENT
 PERMANENT EASEMENT
 NEW RIGHT OF WAY

MATCHLINE RIGHT OF WAY PLAN SHEET 4



MATCHLINE STA 130+80.00

MATCHLINE STA 136+20.00



PE	1312 S.F. (0.030 AC.)
TCE	200 S.F. (0.005 AC.)

PE	125 S.F. (0.003 AC.)
TCE	2052 S.F. (0.047 AC.)

PE	893 S.F. (0.021 AC.)
TCE	893 S.F. (0.021 AC.)

PE	783 S.F. (0.018 AC.)
TCE	783 S.F. (0.018 AC.)

PE	863 S.F. (0.020 AC.)
TCE	863 S.F. (0.020 AC.)

LEGEND:

	TEMPORARY EASEMENT
	PERMANENT EASEMENT
	NEW RIGHT OF WAY

PRELIMINARY PLANS

NOT FOR CONSTRUCTION

DATE

DISCLAIMER OF RESPONSIBILITY

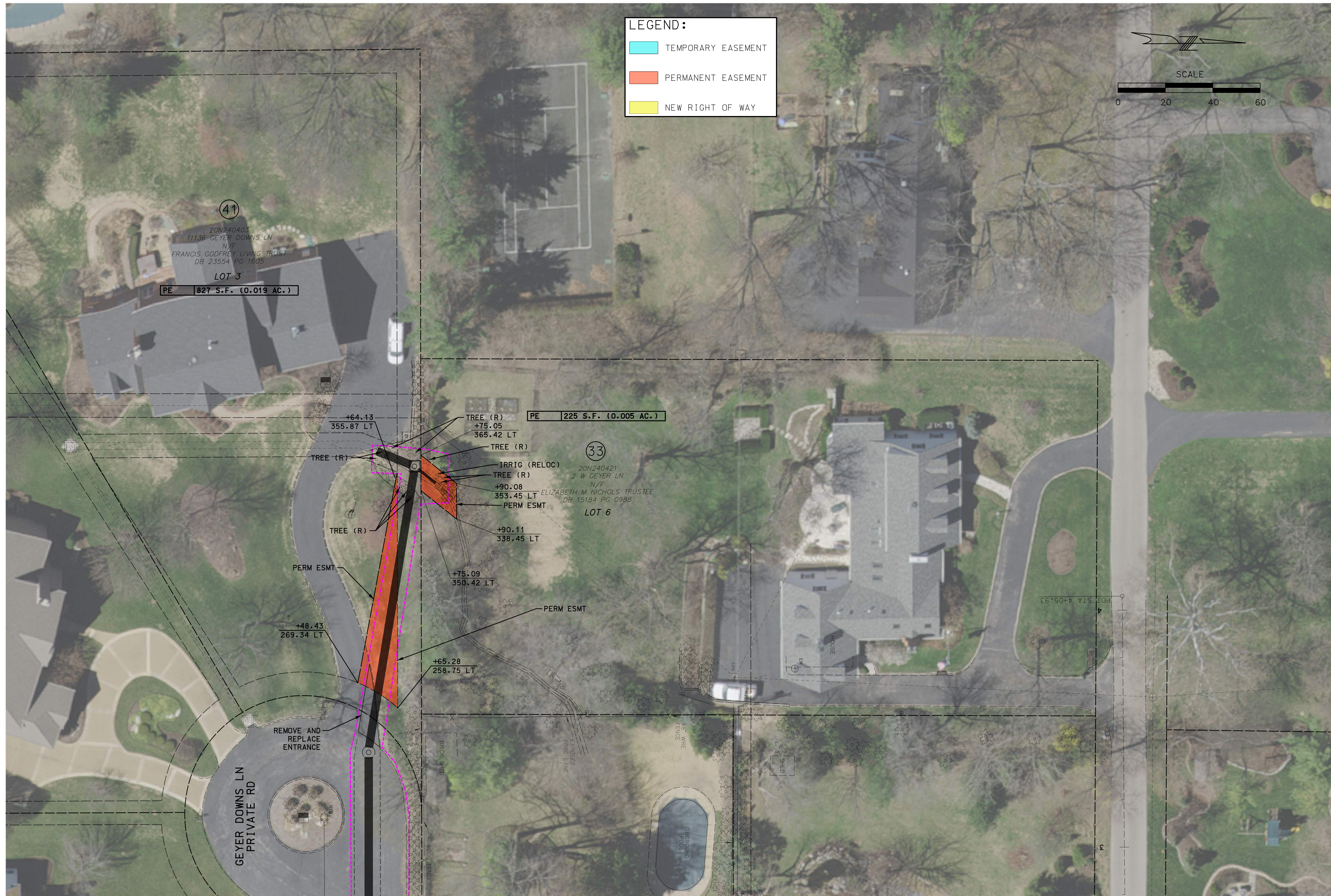
I hereby specify that the documents intended to be authorized by my seal are limited to this sheet, and I hereby disclaim any responsibility for all other Drawings, Specifications, Estimates, Reports or other documents or instruments relating to or intended to be used for any part of the engineering project or survey.

REV	DATE	BY	DESCRIPTION

LOCHMUELLER GROUP
 411 N 10TH STREET, SUITE 200
 SAINT LOUIS, MISSOURI 63101
 P (314) 621-3395 F (314) 621-3288
 WWW.LOCHMUELLER.COM
 MISSOURI STATE ENGINEERING CORPORATION
 CERTIFICATE/LICENSE NO. 2002011852

GEYER ROAD PHASE I IMPROVEMENTS
 RIGHT OF WAY PLAN
 SHEET 3 OF 10

PROJECT/JOB NO.	STP-5503(607)
MSD PROJECT NO.	-
MSD BASE MAP	20N, 21N, 22N
DATE PREPARED	4/21/2021
SHEET	6 OF 13



LEGEND:

- TEMPORARY EASEMENT
- PERMANENT EASEMENT
- NEW RIGHT OF WAY

SCALE
0 20 40 60

41
20N240403
11136 GEYER DOWNS LN
N/F
FRANCIS GODFREY LIVING TRUST
DB 23554 PG 1605
LOT 3
PE 827 S.F. (0.019 AC.)

PE 225 S.F. (0.005 AC.)

33
20N240421
2 W GEYER LN
N/F
ELIZABETH M NICHOLS TRUSTEE
DB 15184 PG 0988
LOT 6

GEYER DOWNS LN
PRIVATE RD

MATCHLINE RIGHT OF WAY PLAN SHEET 3

PRELIMINARY PLANS

NOT FOR CONSTRUCTION

DATE

DISCLAIMER OF RESPONSIBILITY

I hereby specify that the documents intended to be authorized by my seal are limited to this sheet, and I hereby disclaim any responsibility for all other Drawings, Specifications, Estimates, Reports or other documents or instruments relating to or intended to be used for any part of the engineering project or survey.

REV	DATE	BY	DESCRIPTION

LOCHMUELLER GROUP
 411 N 10TH STREET, SUITE 200
 SAINT LOUIS, MISSOURI 63101
 P (314) 621-3395 F (314) 621-3288
 WWW.LOCHGROUP.COM
 MISSOURI STATE ENGINEERING CORPORATION
 CERTIFICATE/LICENSE NO. 2002011852

GEYER ROAD PHASE I IMPROVEMENTS
 RIGHT OF WAY PLAN
 SHEET 4 OF 10

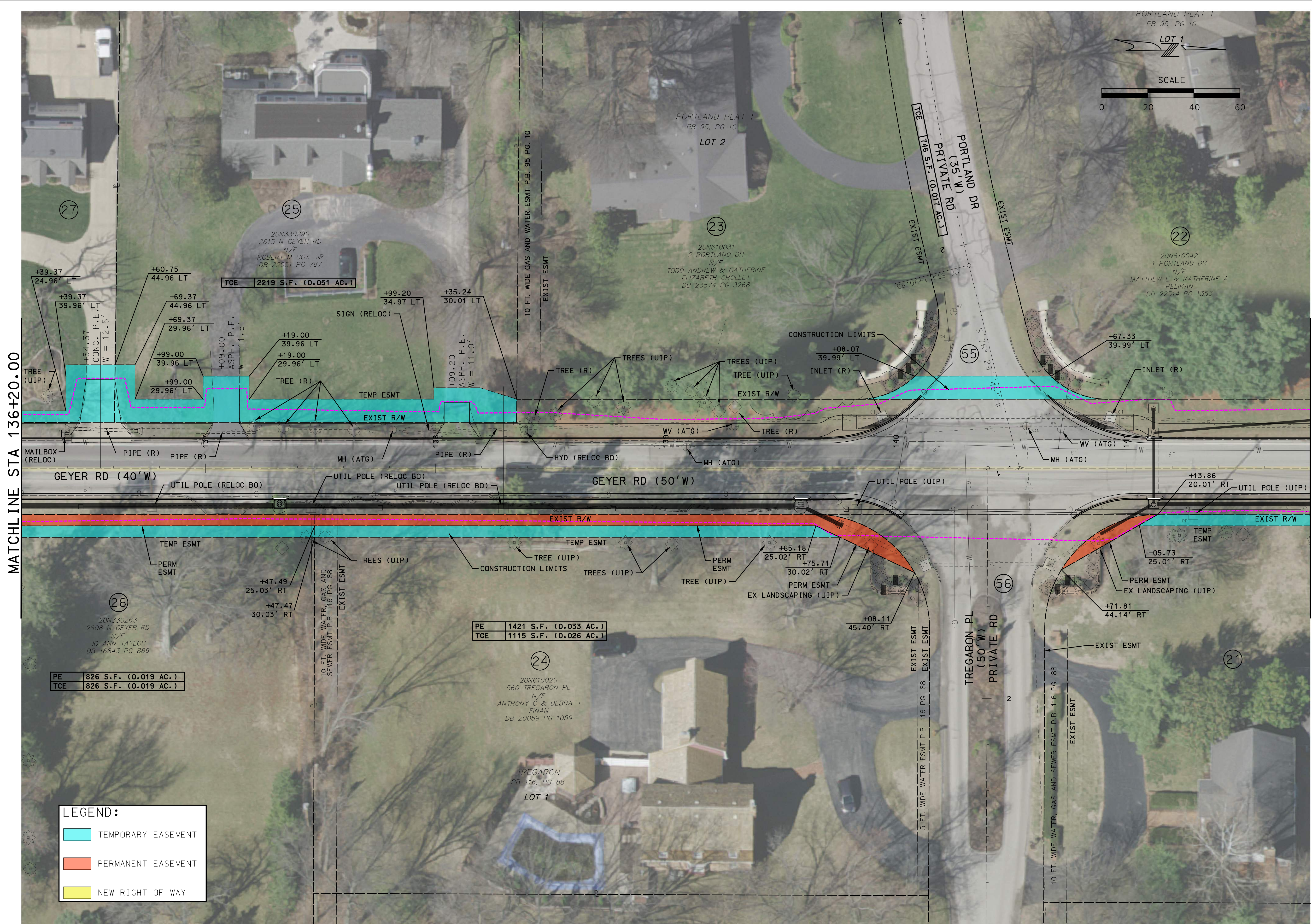
PROJECT/JOB NO.
STP-5503(607)

MSD PROJECT NO.
-

MSD BASE MAP
20N, 21N, 22N

DATE PREPARED
4/21/2021

SHEET
7 OF 13



PRELIMINARY PLANS
 NOT FOR CONSTRUCTION
 DATE

DISCLAIMER OF RESPONSIBILITY
 I hereby specify that the documents intended to be authorized by my seal are limited to this sheet, and I hereby disclaim any responsibility for all other drawings, specifications, estimates, reports or other documents or instruments relating to or intended to be used for any part of the engineering project or survey.

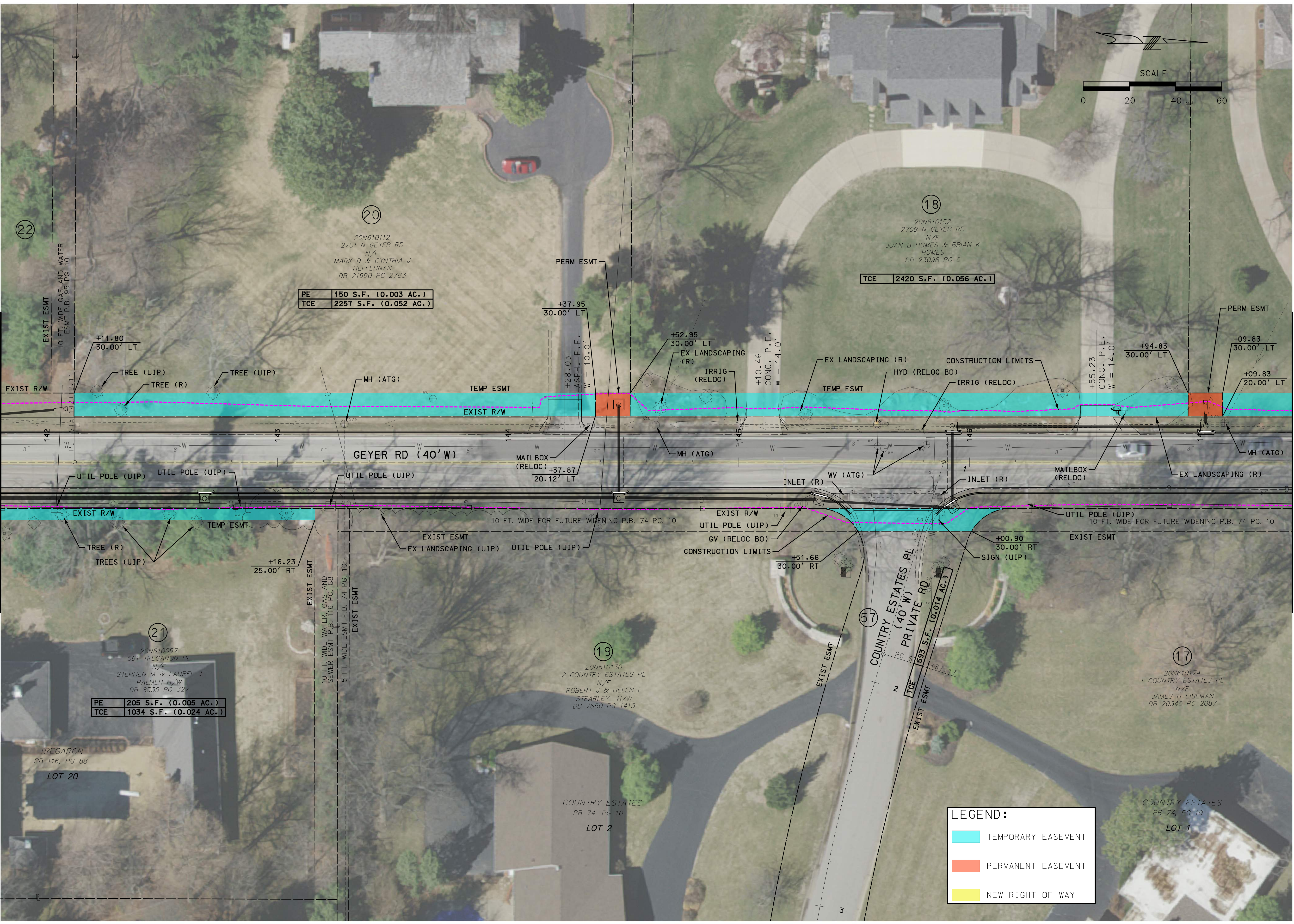
REV	DATE	BY	DESCRIPTION

LOCHMUELLER GROUP
 411 N 10TH STREET, SUITE 200
 SAINT LOUIS, MISSOURI 63101
 P (314) 621-3395 F (314) 621-3288
 WWW.LOCHMUELLERGROUP.COM
 MISSOURI STATE ENGINEERING CORPORATION
 CERTIFICATE/LICENSE NO. 2002011852

GEYER ROAD PHASE 1 IMPROVEMENTS
RIGHT OF WAY PLAN
SHEET 5 OF 10

PROJECT/JOB NO. STP-5503(607)
MSD PROJECT NO. -
MSD BASE MAP 20N, 21N, 22N
DATE PREPARED 4/21/2021
SHEET 8 OF 13

LOCHMUELLER PROJECT NO. 519-0003



MATCHLINE STA 141+80.00

MATCHLINE STA 147+40.00

PE	150 S.F. (0.003 AC.)
TCE	2257 S.F. (0.052 AC.)

PE	205 S.F. (0.005 AC.)
TCE	1034 S.F. (0.024 AC.)

LEGEND:

	TEMPORARY EASEMENT
	PERMANENT EASEMENT
	NEW RIGHT OF WAY

PRELIMINARY PLANS
NOT FOR CONSTRUCTION
DATE _____

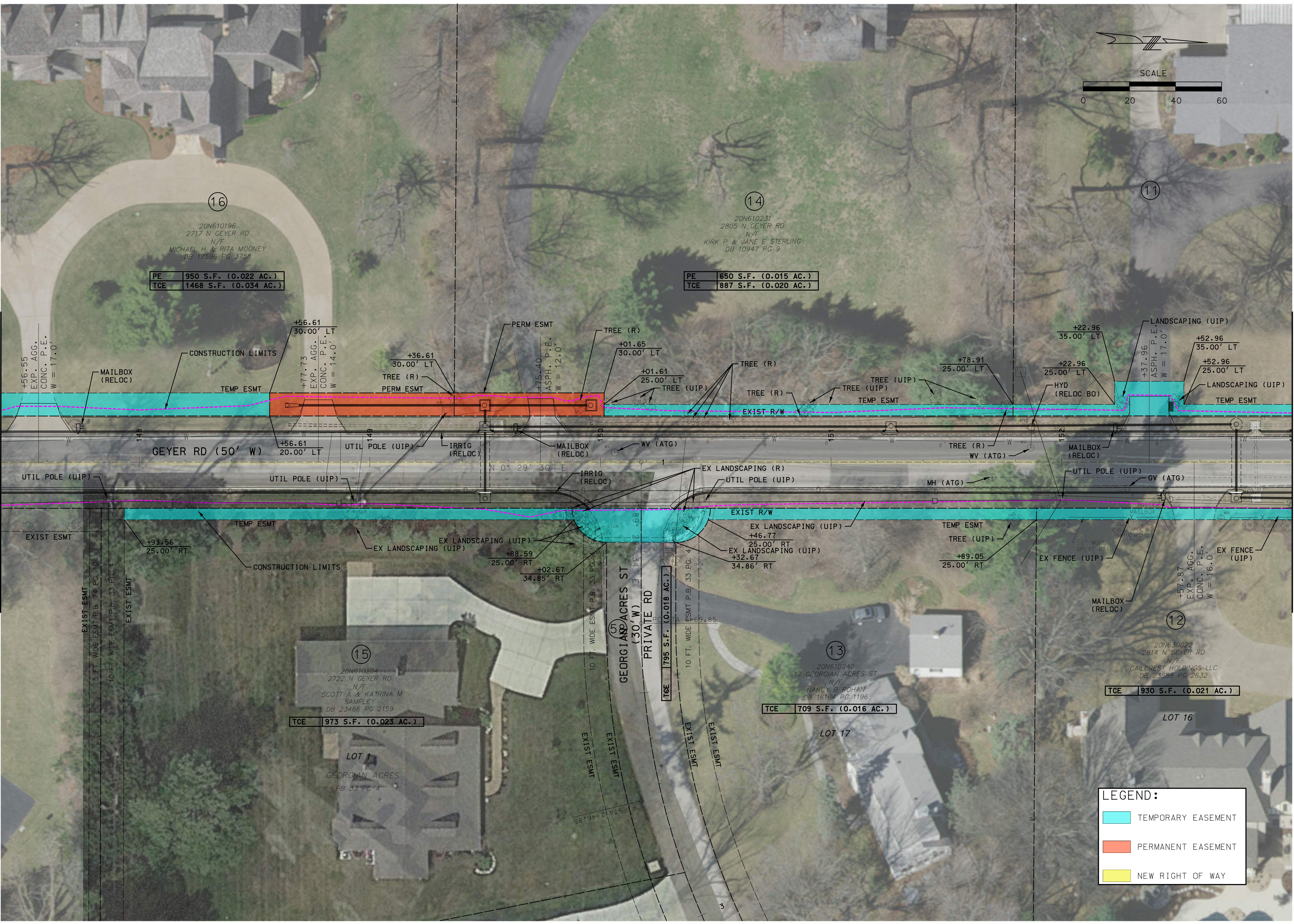
DISCLAIMER OF RESPONSIBILITY
I hereby specify that the documents intended to be authorized by my seal are limited to this sheet, and I hereby disclaim any responsibility for all other drawings, specifications, estimates, reports or other documents or instruments relating to or intended to be used for any part of the engineering project or survey.

REV	DATE	BY	DESCRIPTION

LOCHMUELLER GROUP
411 N 10TH STREET, SUITE 200
SAINT LOUIS, MISSOURI 63101
P (314) 621-3395 F (314) 621-3288
WWW.LOCHMUELLERGROUP.COM
MISSOURI STATE ENGINEERING CORPORATION
CERTIFICATE/LICENSE NO. 2002011852

GEYER ROAD PHASE I IMPROVEMENTS
RIGHT OF WAY PLAN
SHEET 6 OF 10

PROJECT/JOB NO. STP-5503(607)
MSD PROJECT NO. -
MSD BASE MAP 20N, 21N, 22N
DATE PREPARED 4/21/2021
SHEET 9 OF 13



MATCHLINE STA 147+40.00

MATCHLINE STA 153+00.00

PE	950 S.F. (0.022 AC.)
TCE	1468 S.F. (0.034 AC.)

PE	650 S.F. (0.015 AC.)
TCE	887 S.F. (0.020 AC.)

TCE	973 S.F. (0.023 AC.)
-----	----------------------

TCE	709 S.F. (0.016 AC.)
-----	----------------------

TCE	930 S.F. (0.021 AC.)
-----	----------------------

LEGEND:

	TEMPORARY EASEMENT
	PERMANENT EASEMENT
	NEW RIGHT OF WAY

PRELIMINARY PLANS
NOT FOR CONSTRUCTION
DATE _____

DISCLAIMER OF RESPONSIBILITY
I hereby specify that the documents intended to be authorized by my seal are limited to this sheet, and I hereby disclaim any responsibility for all other drawings, specifications, estimates, reports or other documents or instruments relating to or intended to be used for any part of the engineering project or survey.

REV	DATE	BY	DESCRIPTION

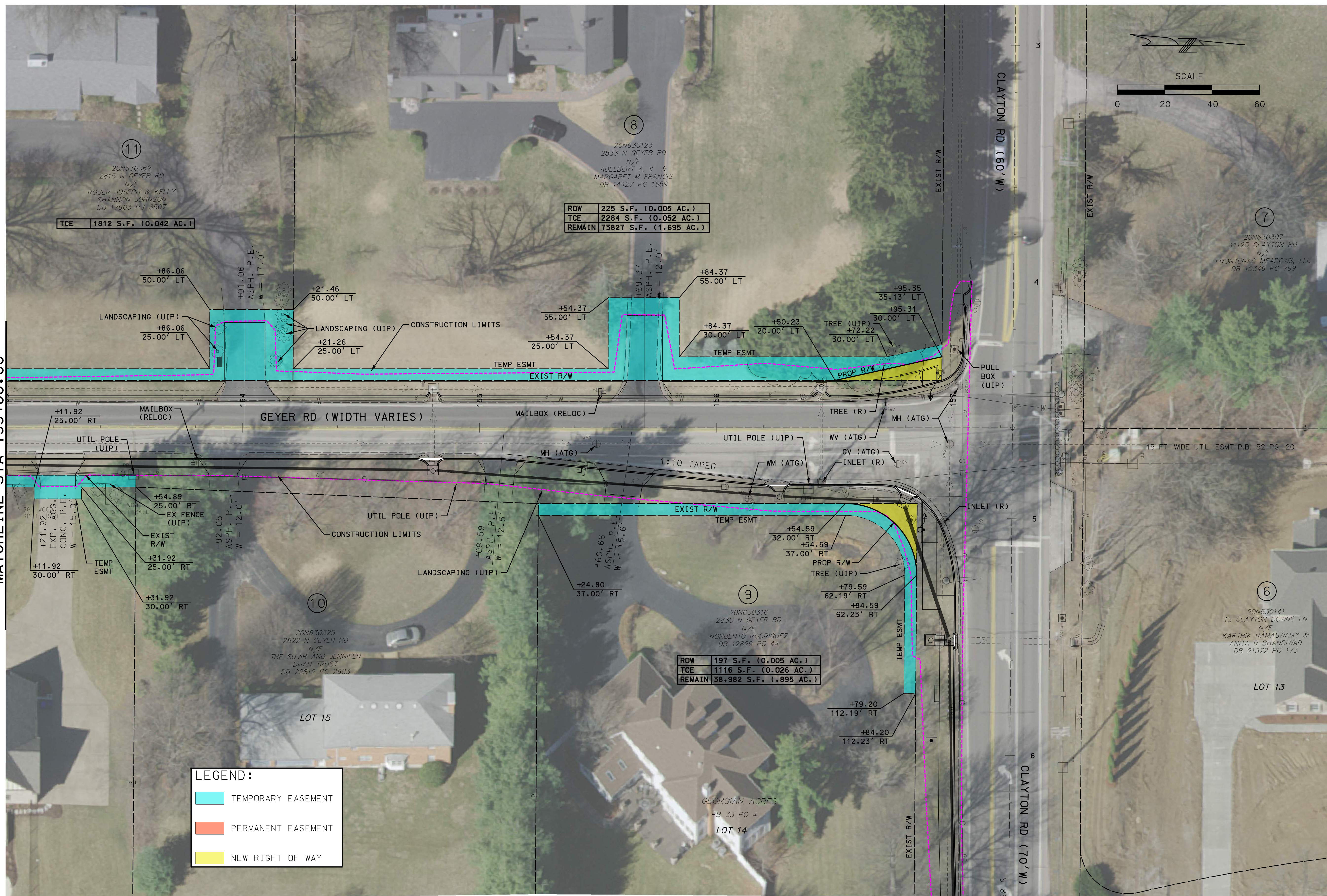
LOCHMUELLER GROUP
411 N 10TH STREET, SUITE 200
SAINT LOUIS, MISSOURI 63101
P (314) 621-3395 F (314) 621-3288
WWW.LOCHMUELLERGROUP.COM
MISSOURI STATE ENGINEERING CORPORATION
CERTIFICATE/LICENSE NO. 2002011852

GEYER ROAD PHASE I IMPROVEMENTS
RIGHT OF WAY PLAN
SHEET 7 OF 10

PROJECT/JOB NO. STP-5503(607)
MSD PROJECT NO. -
MSD BASE MAP 20N, 21N, 22N
DATE PREPARED 4/21/2021
SHEET 10 OF 13

MATCHLINE STA 153+00.00

MATCHLINE STA 6+60.00



TCE 1812 S.F. (0.042 AC.)

ROW	225 S.F. (0.005 AC.)
TCE	2284 S.F. (0.052 AC.)
REMAIN	73827 S.F. (1.695 AC.)

ROW	197 S.F. (0.005 AC.)
TCE	1116 S.F. (0.026 AC.)
REMAIN	38,982 S.F. (.895 AC.)

LEGEND:

	TEMPORARY EASEMENT
	PERMANENT EASEMENT
	NEW RIGHT OF WAY

PRELIMINARY PLANS

NOT FOR CONSTRUCTION

DATE

DISCLAIMER OF RESPONSIBILITY

I hereby specify that the documents intended to be authorized by my seal are limited to this sheet, and I hereby disclaim any responsibility for all other Drawings, Specifications, Estimates, Reports or other documents or instruments relating to or intended to be used for any part of the engineering project or survey.

REV	DATE	BY	DESCRIPTION

LOCHMUELLER GROUP
 411 N 10TH STREET, SUITE 200
 SAINT LOUIS, MISSOURI 63101
 P (314) 621-3395 F (314) 621-3288
 WWW.LOCHMUELLER.COM
 MISSOURI STATE ENGINEERING CORPORATION
 CERTIFICATE/LICENSE NO. 2002011852

GEYER ROAD PHASE I IMPROVEMENTS
 RIGHT OF WAY PLAN
 SHEET 8 OF 10

PROJECT/JOB NO.	STP-5503(607)
MSD PROJECT NO.	-
MSD BASE MAP	20N, 21N, 22N
DATE PREPARED	4/21/2021
SHEET	11 OF 13

PRELIMINARY PLANS

NOT FOR CONSTRUCTION

DATE

DISCLAIMER OF RESPONSIBILITY

I hereby specify that the documents intended to be authorized by my seal are limited to this sheet, and I hereby disclaim any responsibility for all other drawings, specifications, estimates, reports or other documents or instruments relating to or intended to be used for any part of the engineering project or survey.

REV	DATE	BY	DESCRIPTION

LOCHMUELLER GROUP
 411 N 10TH STREET, SUITE 200
 SAINT LOUIS, MISSOURI 63101
 P (314) 621-3395 F (314) 621-3288
 WWW.LOCHMUELLER.COM
 MISSOURI STATE ENGINEERING CORPORATION
 CERTIFICATE/LICENSE NO. 2002011852

GEYER ROAD PHASE I IMPROVEMENTS
 RIGHT OF WAY PLAN
 SHEET 9 OF 10

PROJECT/JOB NO. STP-5503(607)
MSD PROJECT NO. -
MSD BASE MAP 20N, 21N, 22N
DATE PREPARED 4/21/2021
SHEET 12 OF 13



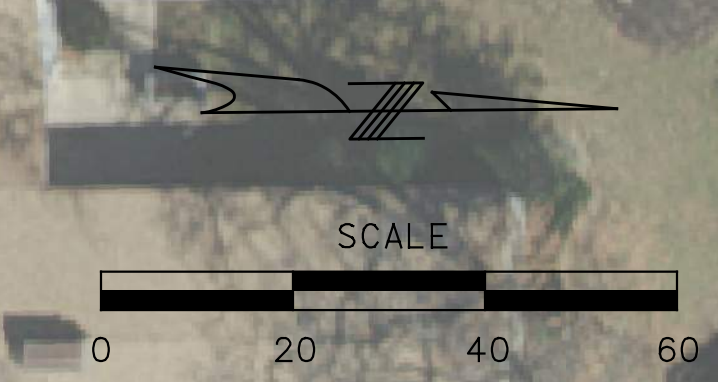
LEGEND:

- TEMPORARY EASEMENT
- PERMANENT EASEMENT
- NEW RIGHT OF WAY

MATCHLINE STA 6+60.00

MATCHLINE STA 12+20.00

MATCHLINE STA 12+20.00



LEGEND:

	TEMPORARY EASEMENT
	PERMANENT EASEMENT
	NEW RIGHT OF WAY

PRELIMINARY PLANS
NOT FOR CONSTRUCTION
DATE _____

DISCLAIMER OF RESPONSIBILITY
I hereby specify that the documents intended to be authorized by my seal are limited to this sheet, and I hereby disclaim any responsibility for all other drawings, specifications, estimates, reports or other documents or instruments relating to or intended to be used for any part of the engineering project or survey.

REV	DATE	BY	DESCRIPTION

LOCHMUELLER GROUP
411 N 10TH STREET, SUITE 200
SAINT LOUIS, MISSOURI 63101
P (314) 621-3395 F (314) 621-3288
WWW.LOCHGROUP.COM
MISSOURI STATE ENGINEERING CORPORATION
CERTIFICATE/LICENSE NO. 2002011852

GEYER ROAD PHASE I IMPROVEMENTS
RIGHT OF WAY PLAN
SHEET 10 OF 10

PROJECT/JOB NO. STP-5503(607)
MSD PROJECT NO. -
MSD BASE MAP 20N, 21N, 22N
DATE PREPARED 4/21/2021
SHEET 13 OF 13

LOCHMUELLER PROJECT NO. 519-0003