

DESIGN DESIGNATION

FUNCTIONAL CLASSIFICATION

COLLECTOR

A.D.T. - 2017 = 4,345

A.D.T. - 2037 = 4,562

INDEX OF SHEETS

DESCRIPTION	SHEET NUMBER
TITLE SHEET	1
TYPICAL SECTIONS	2-3
PLAN SHEETS	4-13
TRAFFIC SIGNAL PLANS	14

CONVENTIONAL SYMBOLS

(USED IN PLANS)

	EXISTING	NEW
BUILDINGS AND STRUCTURES		
GUARD RAIL		
CONCRETE RIGHT-OF-WAY MARKER		
STEEL RIGHT-OF-WAY MARKER		
LOCATION SURVEY MARKER		
UTILITIES		
FIBER OPTICS		
OVERHEAD TELEPHONE		
UNDERGROUND TELEPHONE		
OVERHEAD POWER		
UNDERGROUND POWER		
GAS		
WATER		
MANHOLE		
FIRE HYDRANT		
WATER VALVE		
WATER METER		
DROP INLET		
DITCH BLOCK		
GROUND MOUNTED SIGN		
LIGHT POLE		
H-FRAME POWER POLE		
TELEPHONE PEDESTAL		
FENCE		
CHAIN LINK		
WOVEN WIRE		
GATE POST		
BENCHMARK		

NOTE: DASHED OR OPEN SYMBOLS INDICATE EXISTING FEATURES

CITY OF FRONTENAC
10555 CLAYTON ROAD
FRONTENAC, MISSOURI 63131
314-994-3200



APPROVED BY:

MAYOR

DATE

**GEYER ROAD - PHASE 1
ROAD IMPROVEMENTS**

FRONTENAC, MISSOURI

FEDERAL PROJECT NO. STP-5503(607)
TIP #6899-20



PROJECT LIMITS

END OF PROJECT (GEYER RD)	STA	152+25.07
BEGINNING OF PROJECT (GEYER RD)	STA	124+80.00
APPARENT LENGTH (GEYER RD)		2,745.07 FEET
END OF PROJECT (CLAYTON RD)	STA	14+35.00
BEGINNING OF PROJECT (CLAYTON RD)	STA	3+15.00
APPARENT LENGTH (CLAYTON RD)		1,120 FEET
EQUATIONS AND EXCEPTIONS		N/A
TOTAL CORRECTIONS		N/A
NET LENGTH OF PROJECT		3,865.07 FEET

**PRELIMINARY
PLANS**

NOT FOR
CONSTRUCTION

DATE

**DISCLAIMER OF
RESPONSIBILITY**

I hereby specify that the documents intended to be authorized by my seal are limited to this sheet, and I hereby disclaim any responsibility for all other drawings, specifications, estimates, reports or other documents or instruments relating to or intended to be used for any part of the engineering project or survey.

REV	DATE	BY	DESCRIPTION

LOCHMUELLER GROUP
411 N 10TH STREET, SUITE 200
SAINT LOUIS, MISSOURI 63101
P (314) 621-3395 F (314) 621-3288
WWW.LOCHMUELLERGROUP.COM
MISSOURI STATE ENGINEERING CORPORATION
CERTIFICATE/LICENSE NO. 2002011852

GEYER ROAD PHASE 1
IMPROVEMENTS

COVER SHEET

PROJECT/JOB NO.
STP-5503(607)

MSD PROJECT NO.

MSD BASE MAP

20N, 21N, 22N

DATE PREPARED

7/16/2020

SHEET

1 OF 14

PRELIMINARY PLANS

NOT FOR CONSTRUCTION

DATE

DISCLAIMER OF RESPONSIBILITY

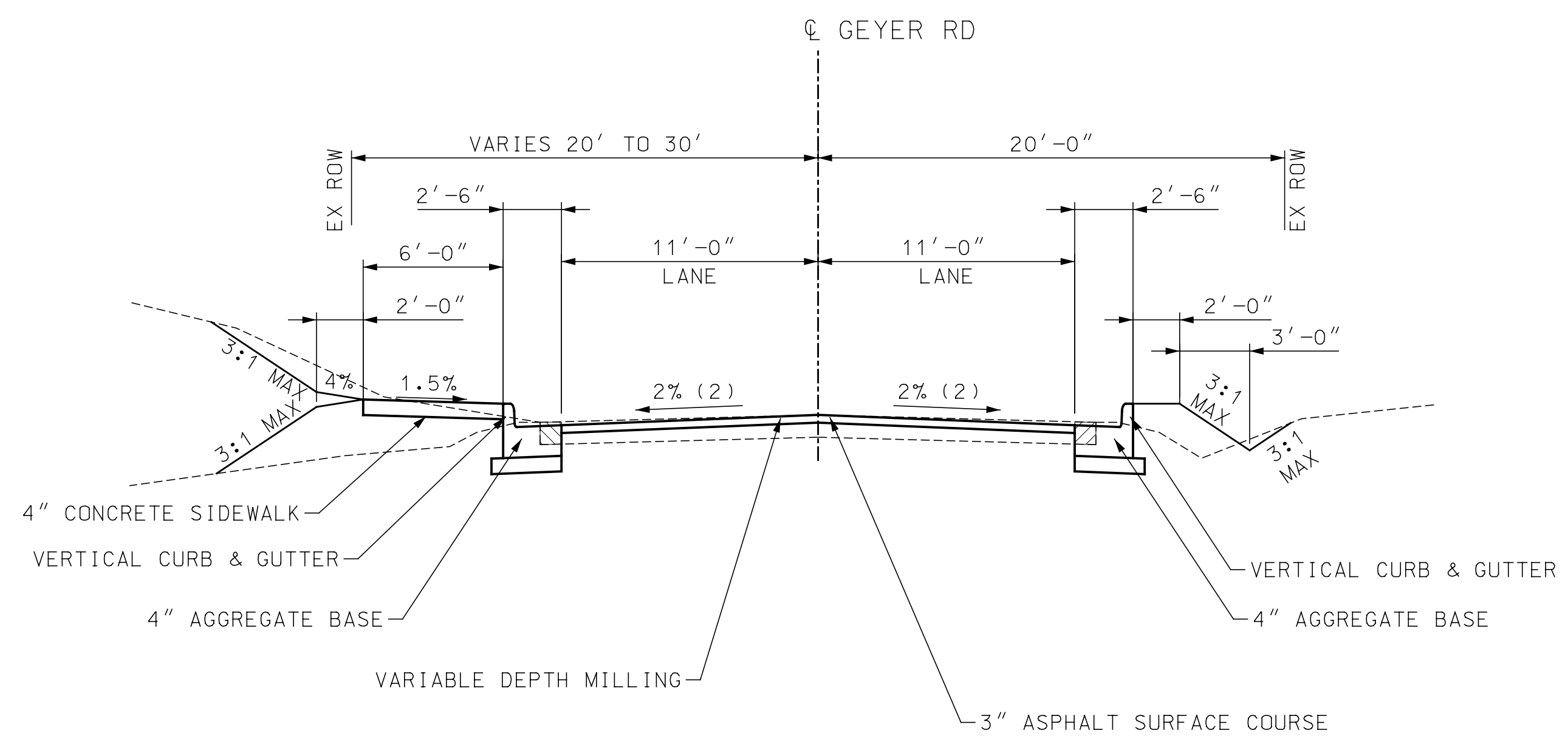
I hereby specify that the documents intended to be authorized by my seal are limited to this sheet, and I hereby disclaim any responsibility for all other Drawings, Specifications, Estimates, Reports or other documents or instruments relating to or intended to be used for any part of the engineering project or survey.

REV	DATE	BY	DESCRIPTION

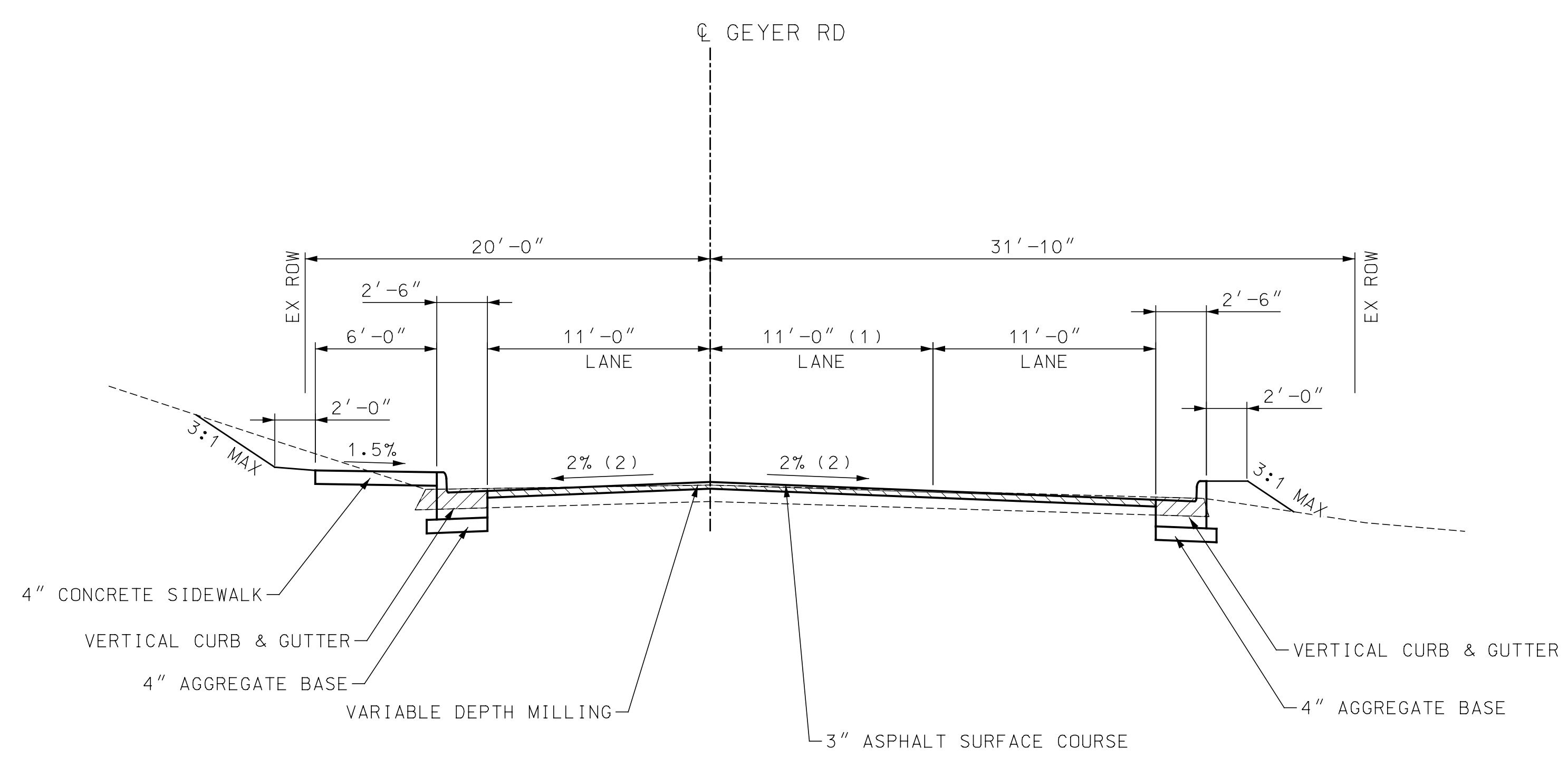
LOCHMUELLER GROUP
 411 N 10TH STREET, SUITE 200
 SAINT LOUIS, MISSOURI 63101
 P (314) 621-3395 F (314) 621-3288
 WWW.LOCHGROUP.COM
 MISSOURI STATE ENGINEERING CORPORATION
 CERTIFICATE/LICENSE NO. 2002011852

GEYER ROAD PHASE I IMPROVEMENTS
 TYPICAL SECTIONS
 SHEET 1 OF 2

PROJECT/JOB NO. STP-5503(607)
MSD PROJECT NO. -
MSD BASE MAP 20N, 21N, 22N
DATE PREPARED 7/16/2020
SHEET 2 OF 14



GEYER ROAD
 STA. 125+00.00 TO STA. 155+10.00



GEYER ROAD
 STA. 155+10.00 TO STA. 157+03.02
 (1) VARIES 0' AT 155+10.00 TO 11' AT 156+20.00

PRELIMINARY PLANS

NOT FOR CONSTRUCTION

DATE

DISCLAIMER OF RESPONSIBILITY

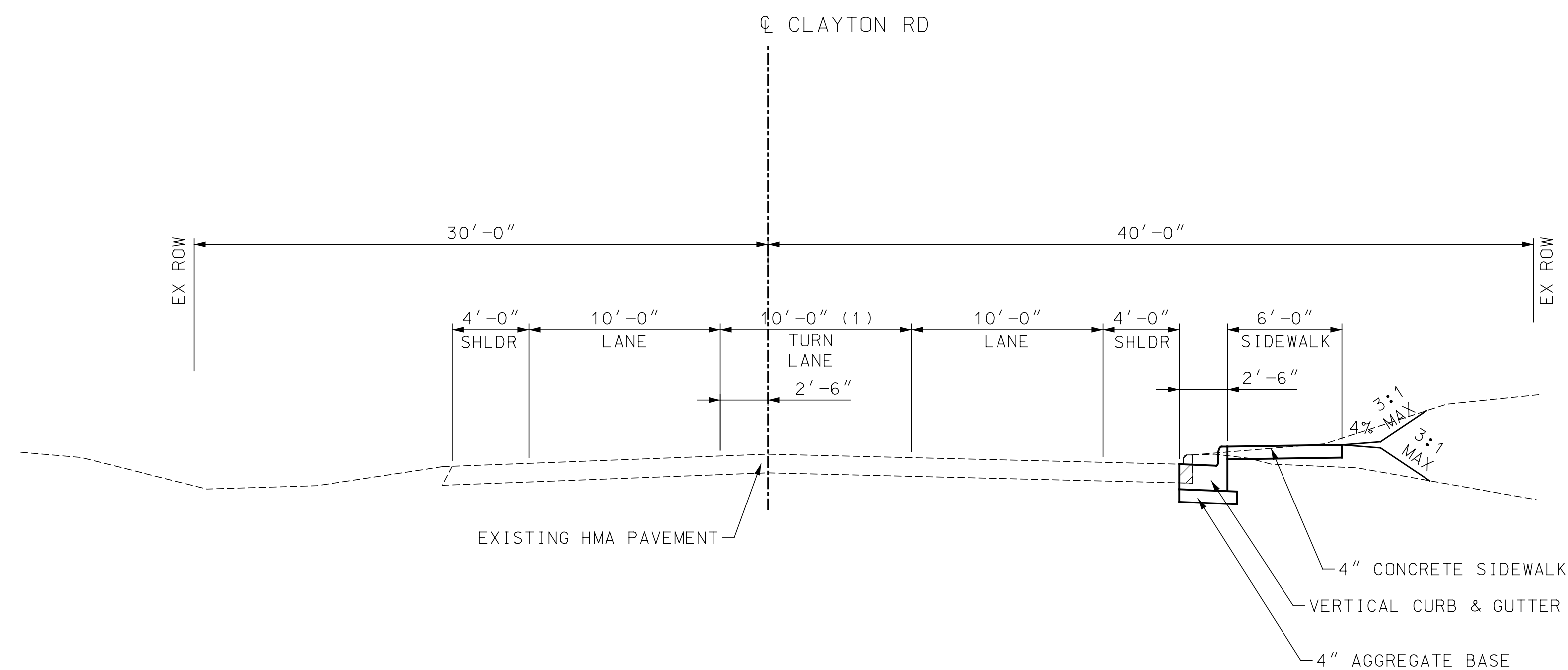
I hereby specify that the documents intended to be authorized by my seal are limited to this sheet, and I hereby disclaim any responsibility for all other Drawings, Specifications, Estimates, Reports or other documents or instruments relating to or intended to be used for any part of the engineering project or survey.

REV	DATE	BY	DESCRIPTION

LOCHMUELLER GROUP
 411 N 10TH STREET, SUITE 200
 SAINT LOUIS, MISSOURI 63101
 P (314) 621-3395 F (314) 621-3288
 WWW.LOCHGROUP.COM
 MISSOURI STATE ENGINEERING CORPORATION
 CERTIFICATE/LICENSE NO. 2002011852

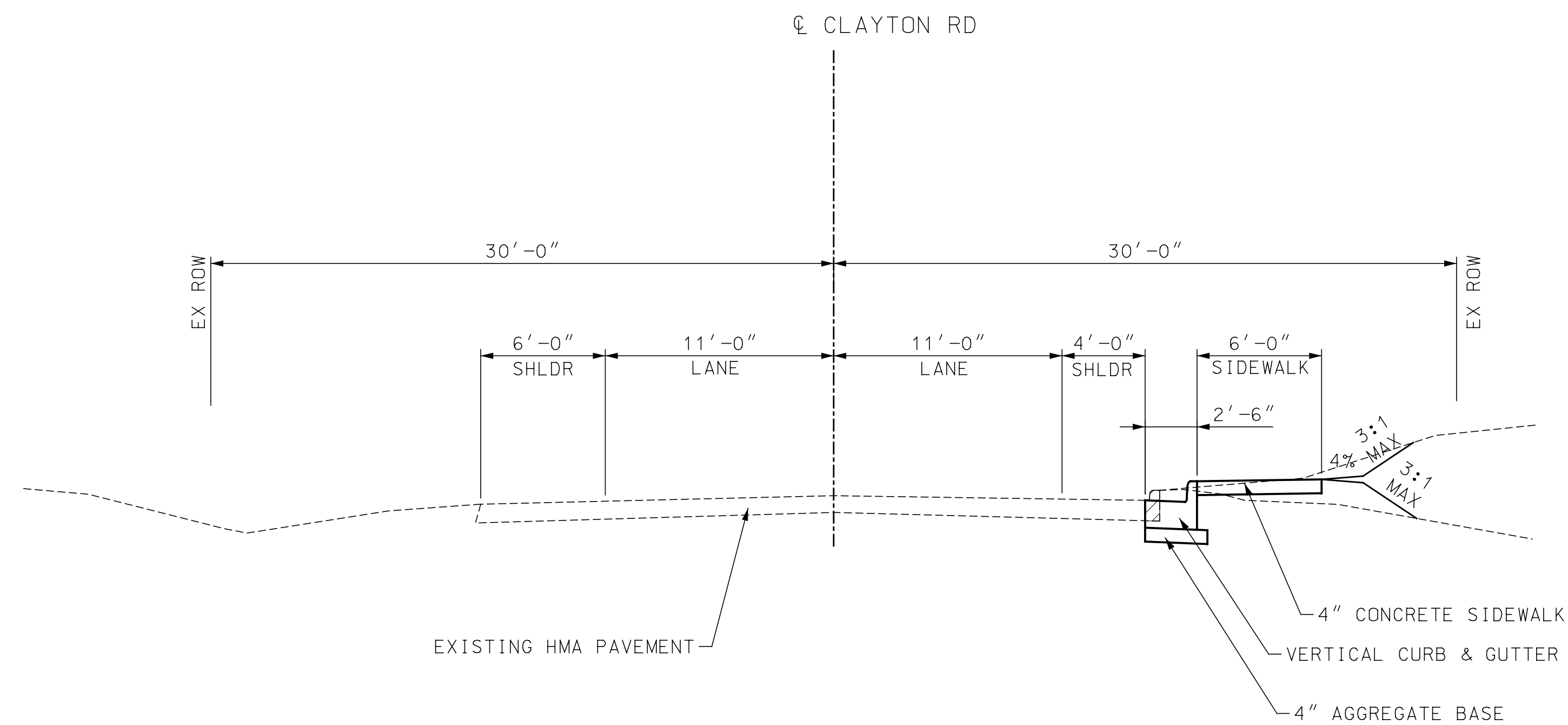
GEYER ROAD PHASE I IMPROVEMENTS
 TYPICAL SECTIONS SHEET 2 OF 2

PROJECT/JOB NO. STP-5503(607)
MSD PROJECT NO. -
MSD BASE MAP 20N, 21N, 22N
DATE PREPARED 7/16/2020
SHEET 3 OF 14



CLAYTON ROAD

STA. 5+10.00 TO STA. 8+20.00
 (1) VARIES 10' AT 6+25.00 TO 0' AT 8+20.00



CLAYTON ROAD

STA. 8+20.00 TO STA. 14+35.00

PRELIMINARY PLANS

NOT FOR CONSTRUCTION

DATE

DISCLAIMER OF RESPONSIBILITY

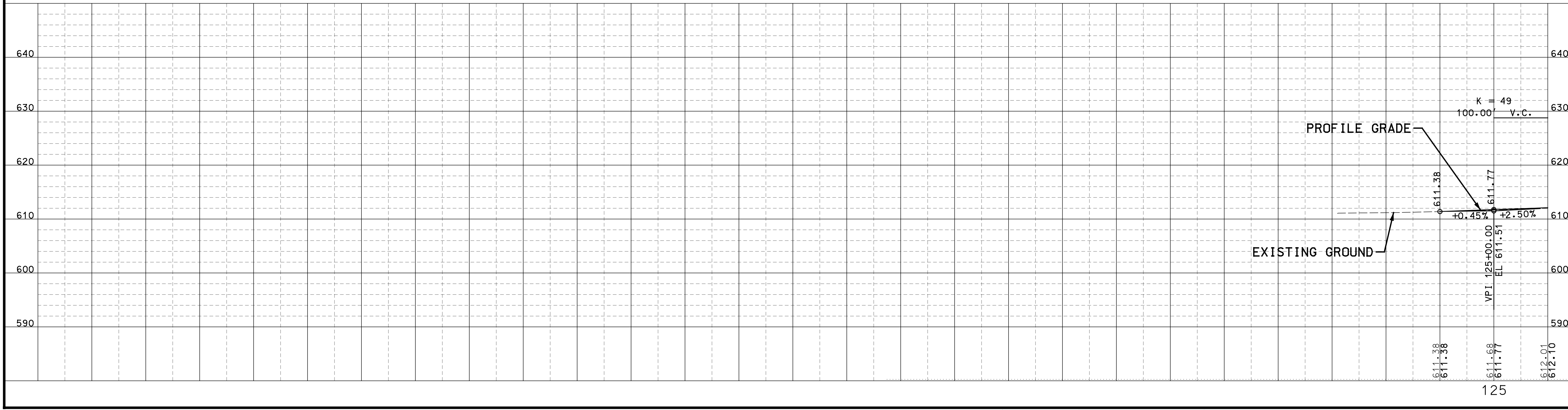
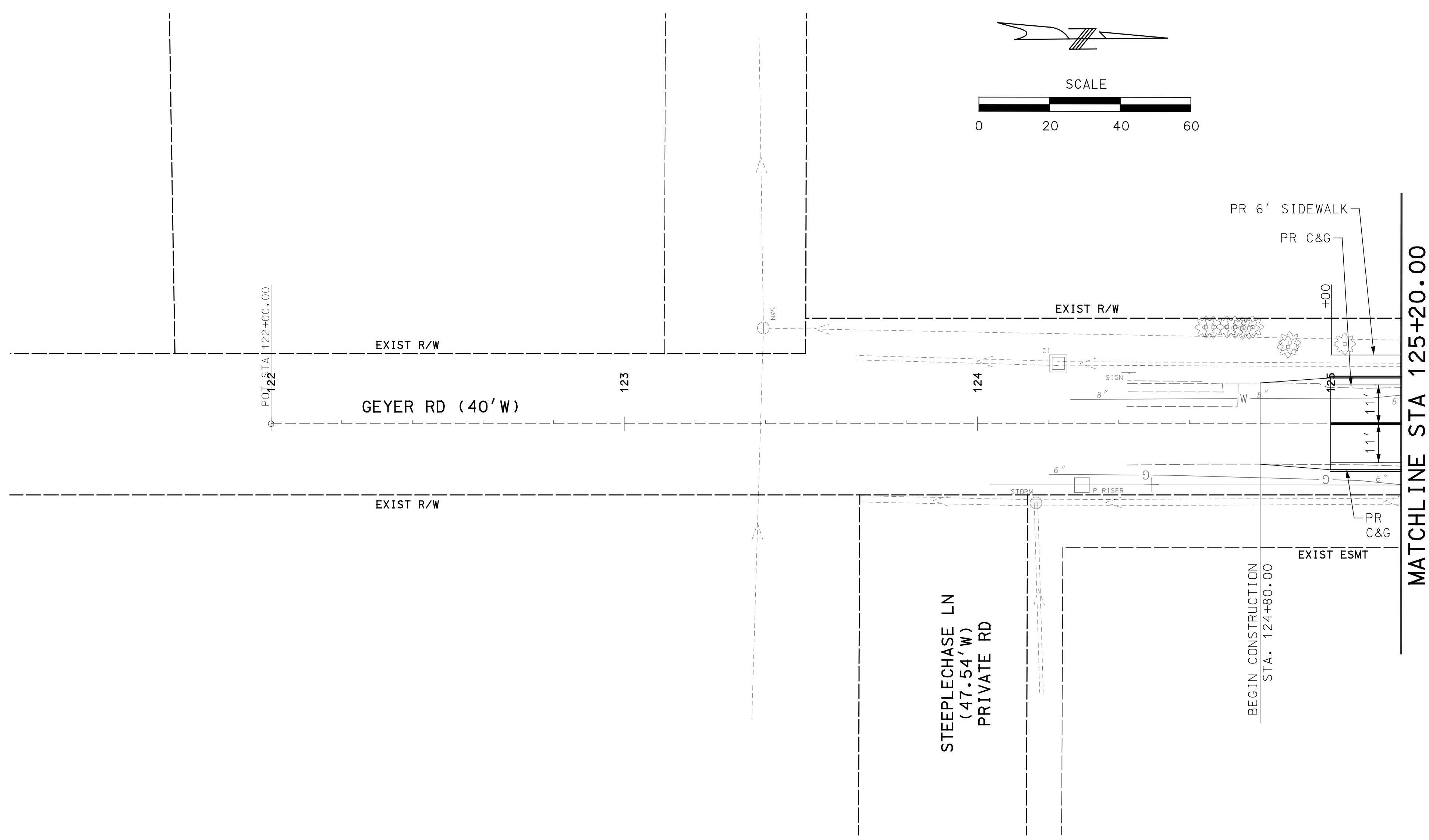
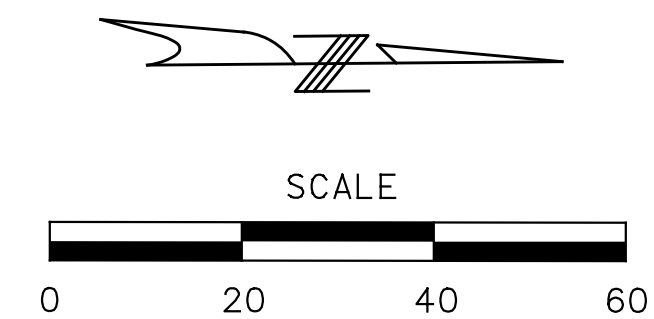
I hereby specify that the documents intended to be authorized by my seal are limited to this sheet, and I hereby disclaim any responsibility for all other drawings, specifications, estimates, reports or other documents or instruments relating to or intended to be used for any part of the engineering project or survey.

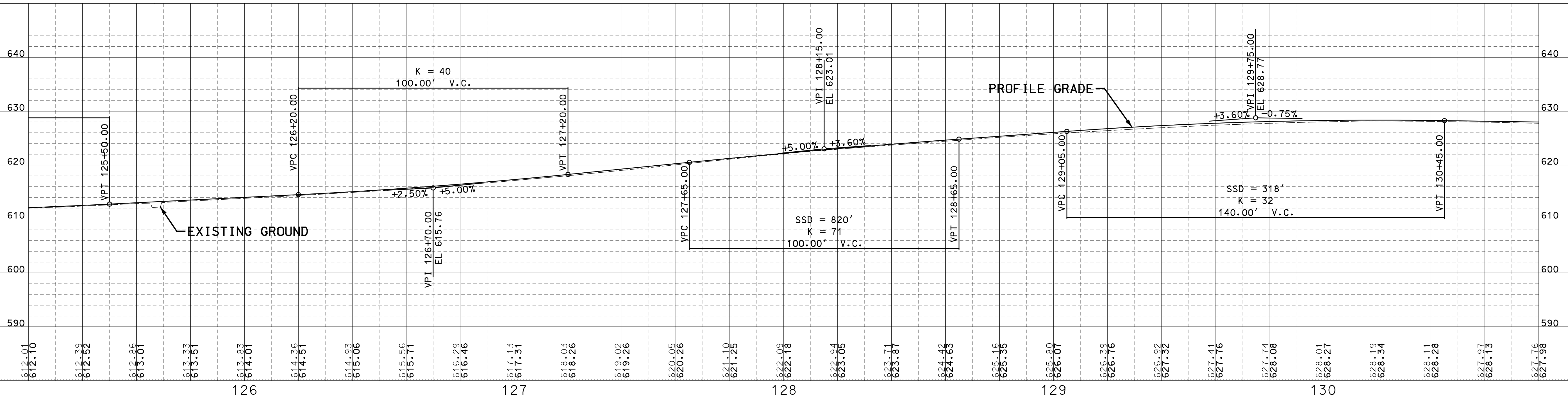
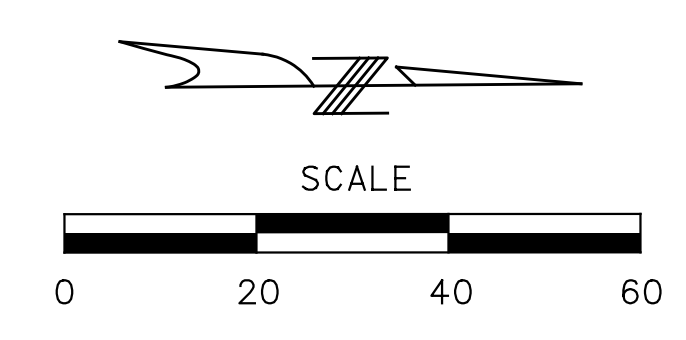
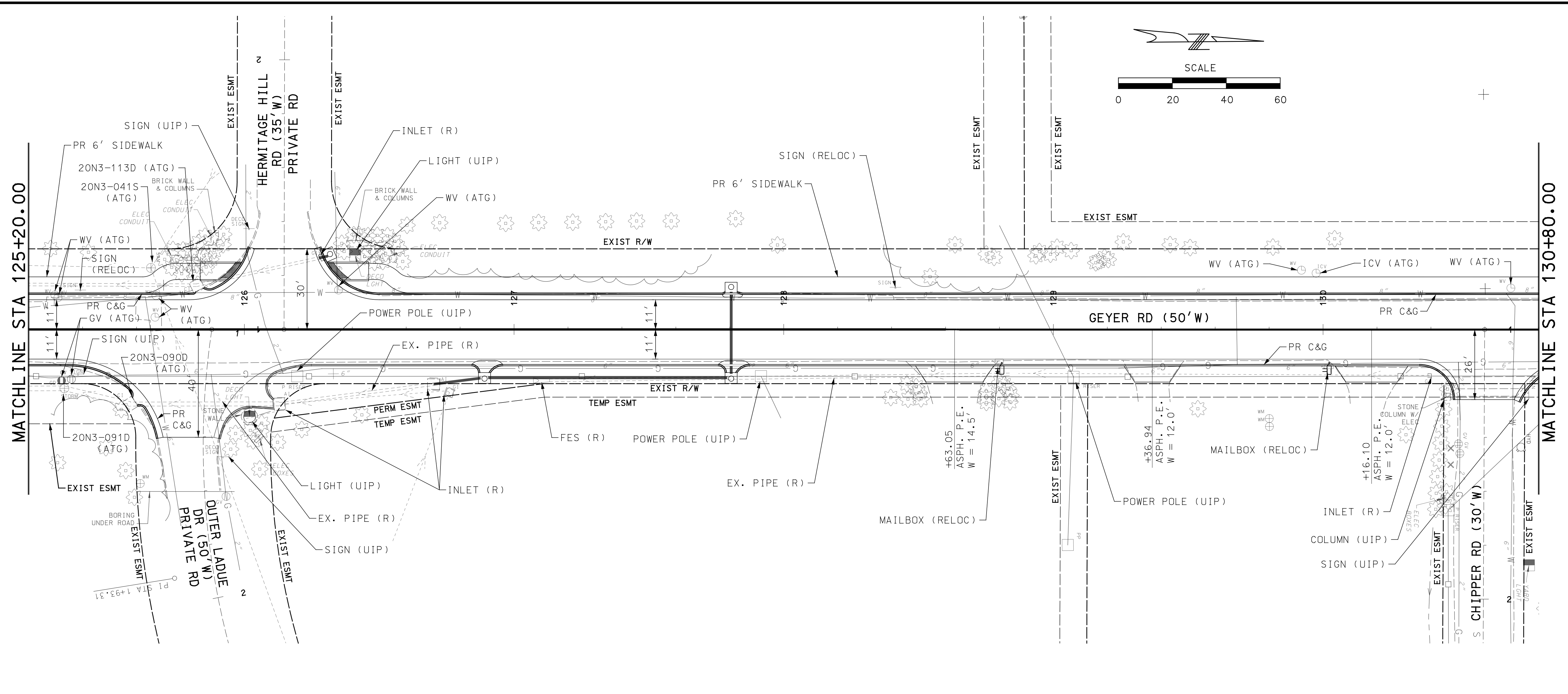
REV	DATE	BY	DESCRIPTION

LOCHMUELLER GROUP
 411 N 10TH STREET, SUITE 200
 SAINT LOUIS, MISSOURI 63101
 P (314) 621-3395 F (314) 621-3288
 WWW.LOCHGROUP.COM
 MISSOURI STATE ENGINEERING CORPORATION
 CERTIFICATE/LICENSE NO. 2002011852

GEYER ROAD PHASE I IMPROVEMENTS
 PLAN AND PROFILE
 SHEET 1 OF 10

PROJECT/JOB NO. STP-5503(607)
MSD PROJECT NO. -
MSD BASE MAP 20N, 21N, 22N
DATE PREPARED 7/16/2020
SHEET 4 OF 14





PRELIMINARY PLANS
NOT FOR CONSTRUCTION
DATE _____

DISCLAIMER OF RESPONSIBILITY
I hereby specify that the documents intended to be authorized by my seal are limited to this sheet, and I hereby disclaim any responsibility for all other Drawings, Specifications, Estimates, Reports or other documents or instruments relating to or intended to be used for any part of the engineering project or survey.

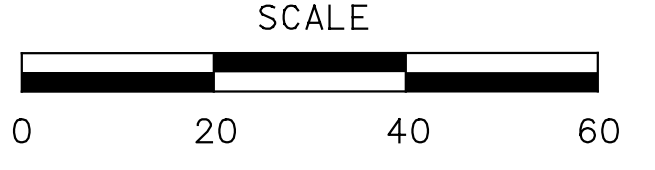
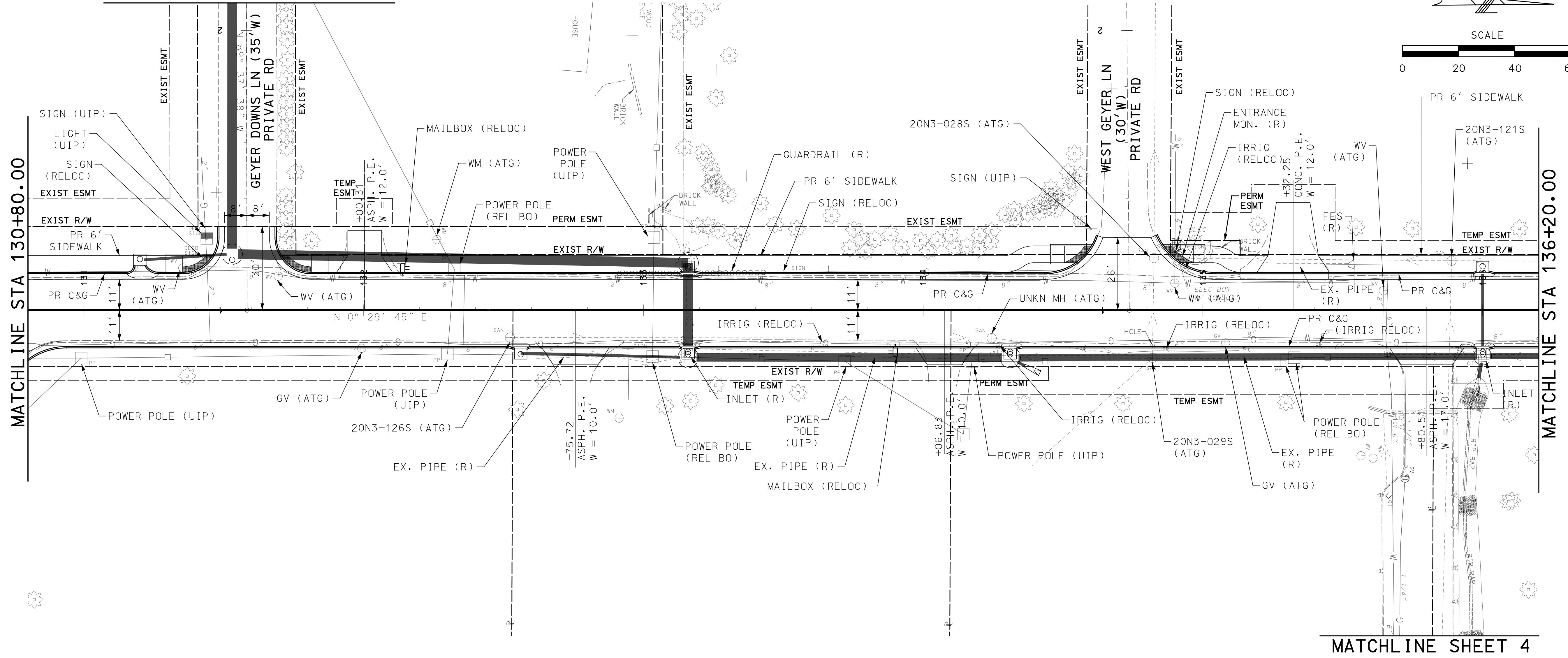
REV	DATE	BY	DESCRIPTION

LOCHMUELLER GROUP
411 N 10TH STREET, SUITE 200
SAINT LOUIS, MISSOURI 63101
P (314) 621-3395 F (314) 621-3288
WWW.LOCHGROUP.COM
MISSOURI STATE ENGINEERING CORPORATION
CERTIFICATE/LICENSE NO. 2002011852

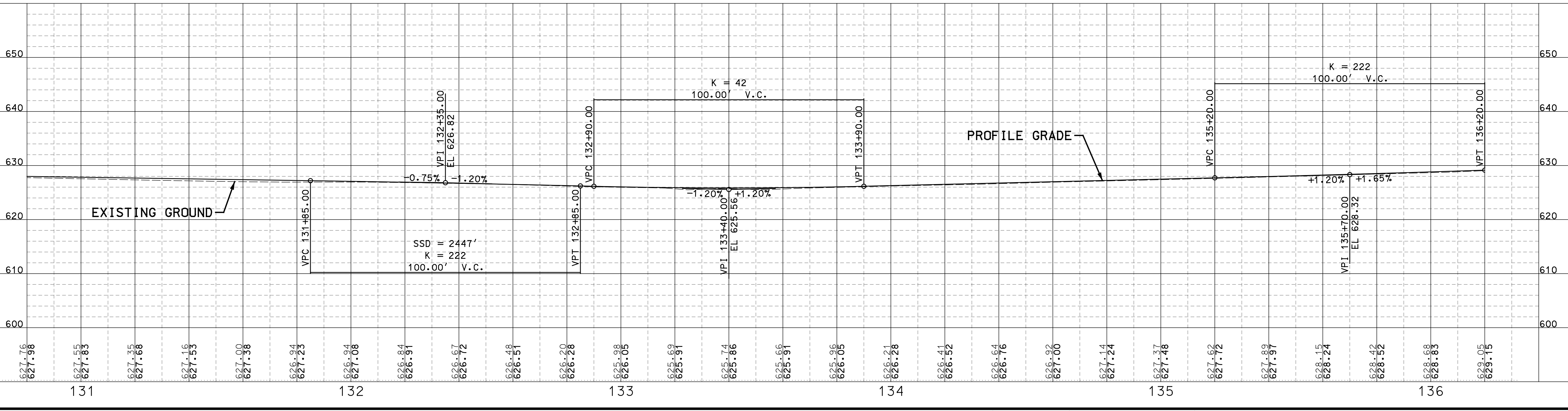
GEYER ROAD PHASE I IMPROVEMENTS
PLAN AND PROFILE
SHEET 2 OF 10

PROJECT/JOB NO.
STP-5503(607)
MSD PROJECT NO.
-
MSD BASE MAP
20N, 21N, 22N
DATE PREPARED
7/16/2020
SHEET
5 OF 14

MATCHLINE SHEET 4



MATCHLINE SHEET 4



PRELIMINARY PLANS
NOT FOR CONSTRUCTION
DATE

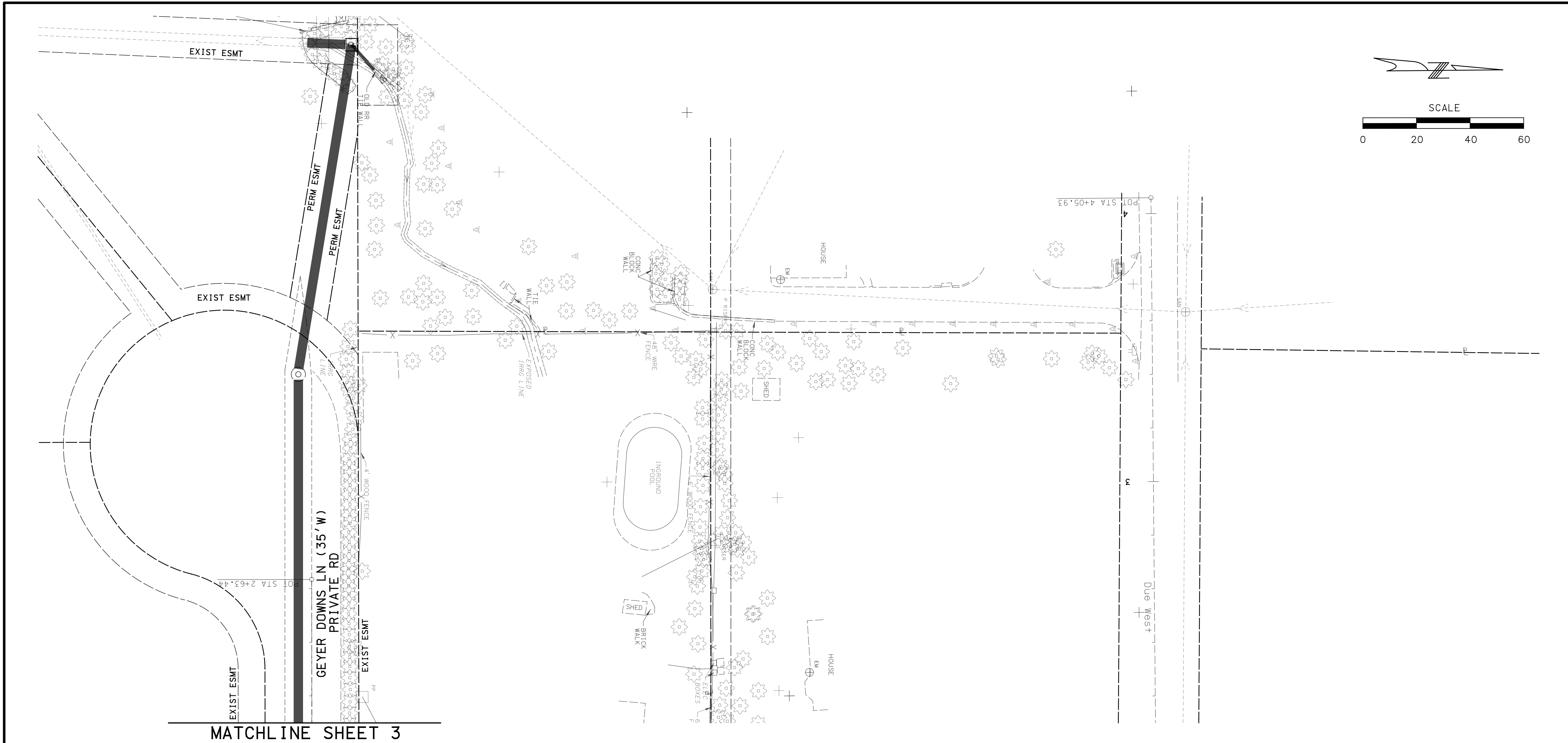
DISCLAIMER OF RESPONSIBILITY
I hereby specify that the documents intended to be authorized by my seal are limited to this sheet, and I hereby disclaim any responsibility for all other Drawings, Specifications, Estimates, Reports or other documents or instruments relating to or intended to be used for any part of the engineering project or survey.

REV	DATE	BY	DESCRIPTION

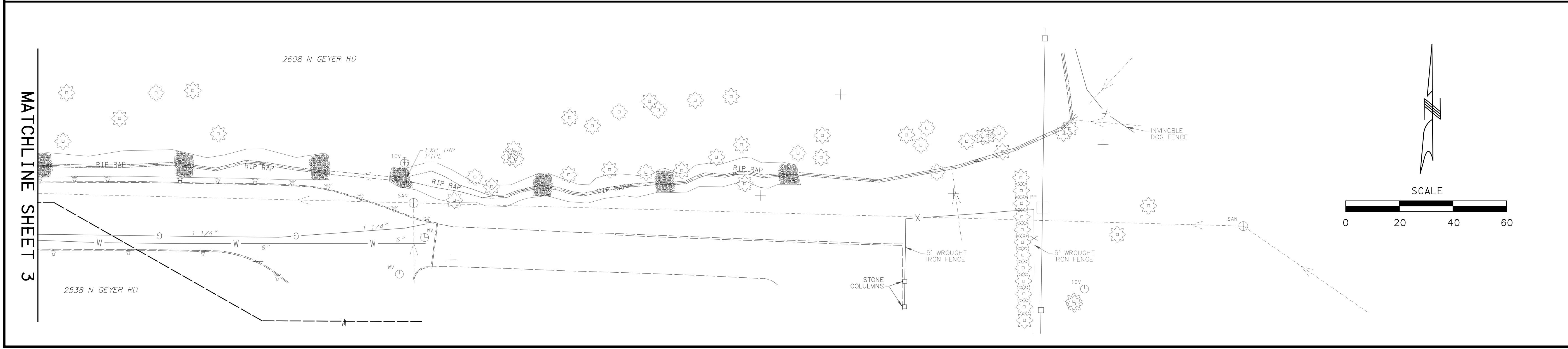
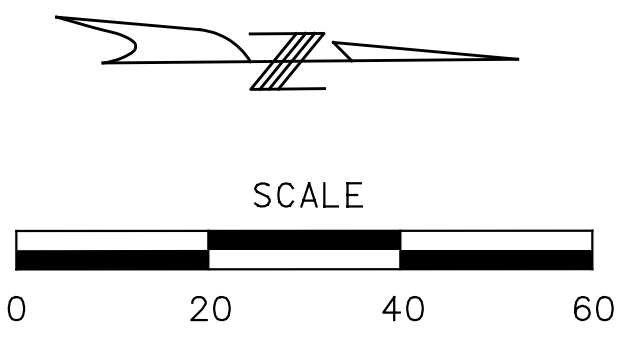
LOCHMUELLER GROUP
411 N 10TH STREET, SUITE 200
SAINT LOUIS, MISSOURI 63101
P (314) 621-3395 F (314) 621-3288
WWW.LOCHGROUP.COM
MISSOURI STATE ENGINEERING CORPORATION
CERTIFICATE/LICENSE NO. 2002011852

GEYER ROAD PHASE I IMPROVEMENTS
PLAN AND PROFILE
SHEET 3 OF 10

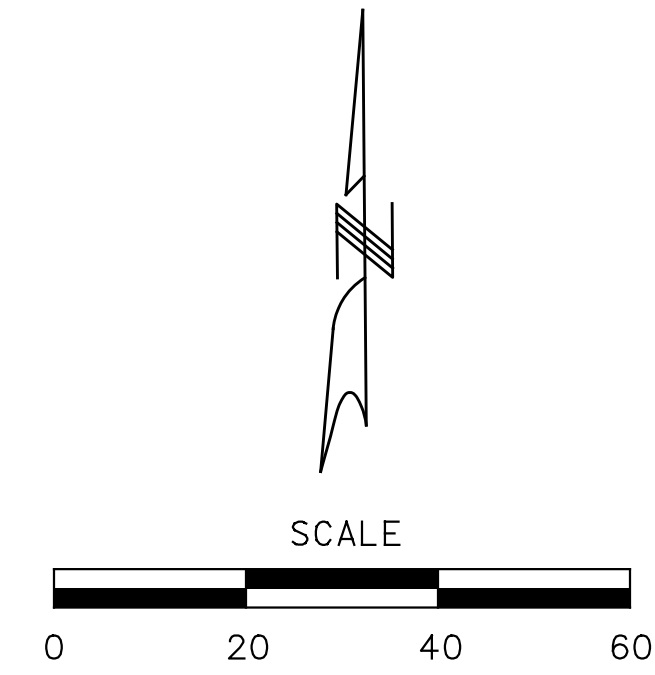
PROJECT/JOB NO. STP-5503(607)
MSD PROJECT NO. -
MSD BASE MAP 20N, 21N, 22N
DATE PREPARED 7/16/2020
SHEET 6 OF 14



MATCHLINE SHEET 3



MATCHLINE SHEET 3



PRELIMINARY PLANS

NOT FOR CONSTRUCTION

DATE _____

DISCLAIMER OF RESPONSIBILITY

I hereby specify that the documents intended to be authorized by my seal are limited to this sheet, and I hereby disclaim any responsibility for all other Drawings, Specifications, Estimates, Reports or other documents or instruments relating to or intended to be used for any part of the engineering project or survey.

REV	DATE	BY	DESCRIPTION

LOCHMUELLER GROUP
 411 N 10TH STREET, SUITE 200
 SAINT LOUIS, MISSOURI 63101
 P (314) 621-3395 F (314) 621-3288
 WWW.LOCHGROUP.COM
 MISSOURI STATE ENGINEERING CORPORATION
 CERTIFICATE/LICENSE NO. 2002011852

GEYER ROAD PHASE I IMPROVEMENTS
PLAN AND PROFILE
SHEET 4 OF 10

PROJECT/JOB NO. STP-5503(607)
MSD PROJECT NO. -
MSD BASE MAP 20N, 21N, 22N
DATE PREPARED 7/16/2020
SHEET 7 OF 14

PRELIMINARY PLANS

NOT FOR CONSTRUCTION

DATE

DISCLAIMER OF RESPONSIBILITY

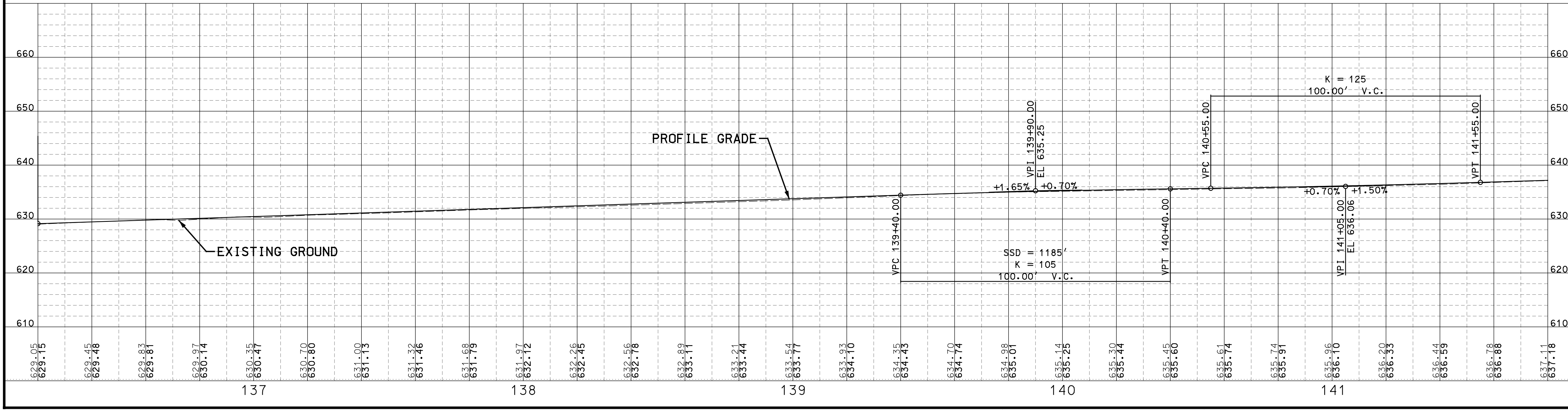
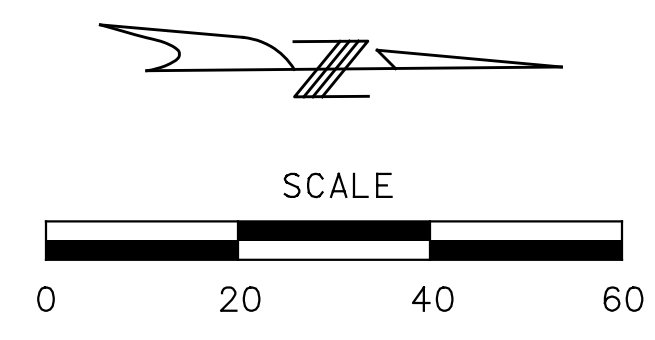
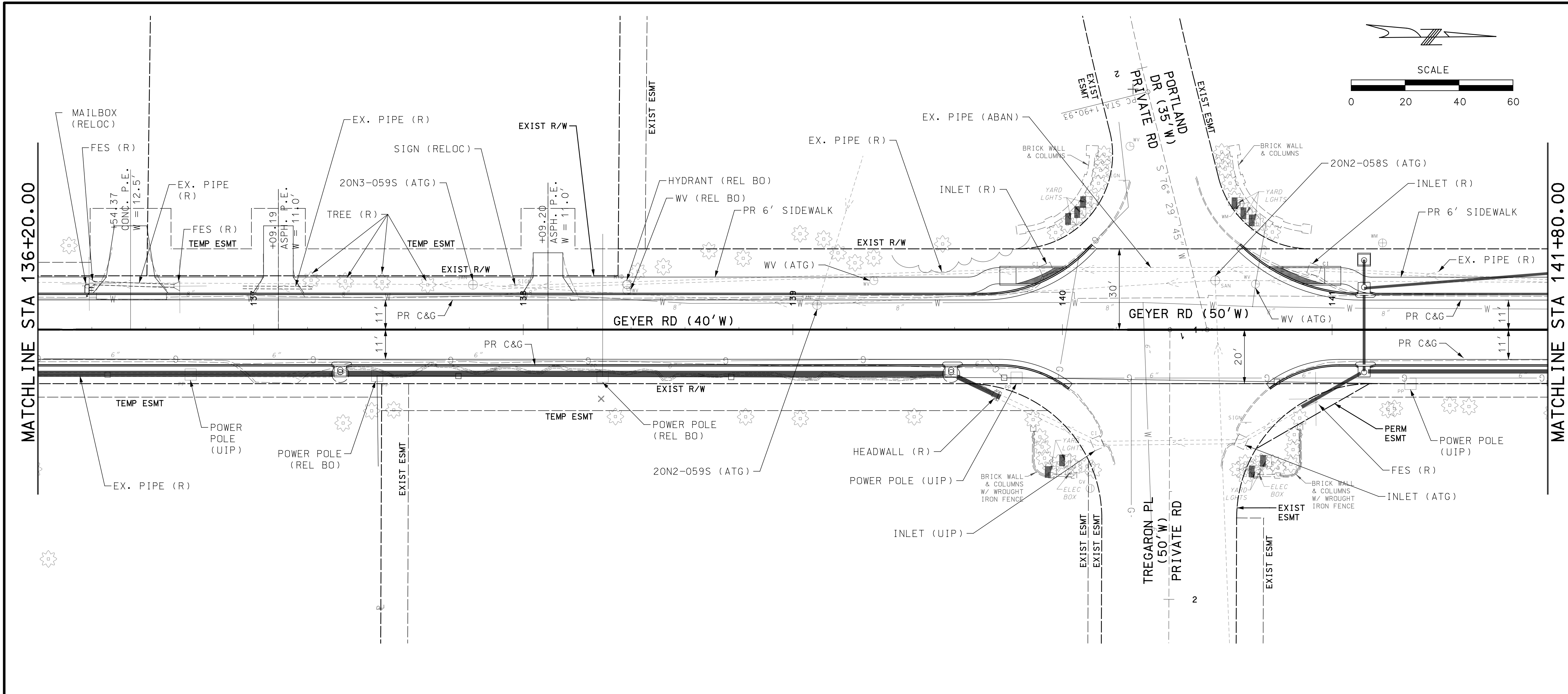
I hereby specify that the documents intended to be authorized by my seal are limited to this sheet, and I hereby disclaim any responsibility for all other drawings, specifications, estimates, reports or other documents or instruments relating to or intended to be used for any part of the engineering project or survey.

REV	DATE	BY	DESCRIPTION

LOCHMUELLER GROUP
 411 N 10TH STREET, SUITE 200
 SAINT LOUIS, MISSOURI 63101
 P (314) 621-3395 F (314) 621-3288
 WWW.LOCHGROUP.COM
 MISSOURI STATE ENGINEERING CORPORATION
 CERTIFICATE/LICENSE NO. 2002011852

GEYER ROAD PHASE I IMPROVEMENTS
PLAN AND PROFILE
SHEET 5 OF 10

PROJECT/JOB NO. STP-5503(607)
MSD PROJECT NO. -
MSD BASE MAP 20N, 21N, 22N
DATE PREPARED 7/16/2020
SHEET 8 OF 14



PRELIMINARY PLANS

NOT FOR CONSTRUCTION

DATE

DISCLAIMER OF RESPONSIBILITY

I hereby specify that the documents intended to be authorized by my seal are limited to this sheet, and I hereby disclaim any responsibility for all other Drawings, Specifications, Estimates, Reports or other documents or instruments relating to or intended to be used for any part of the engineering project or survey.

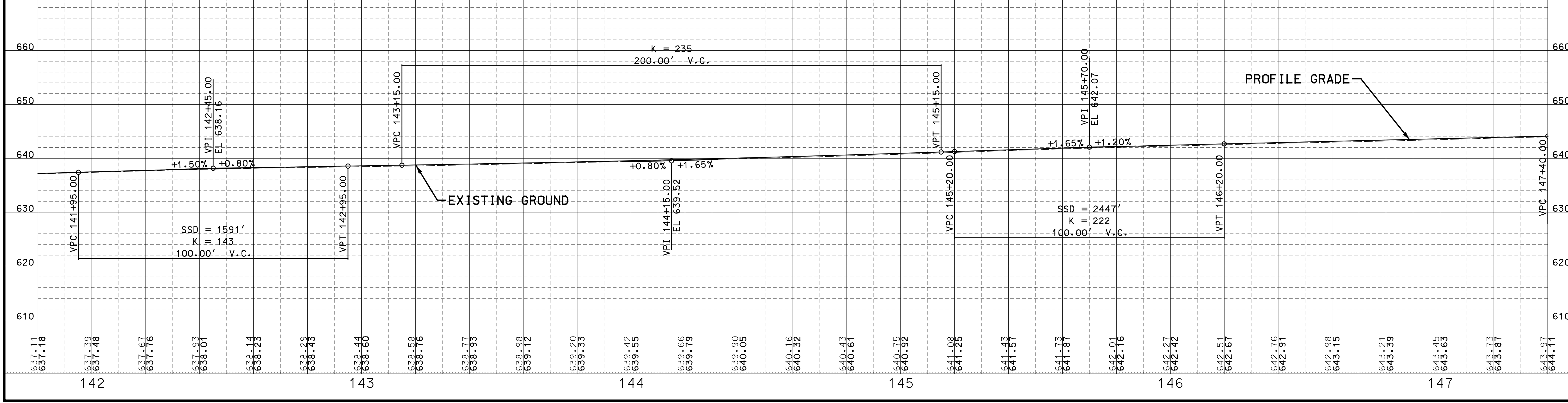
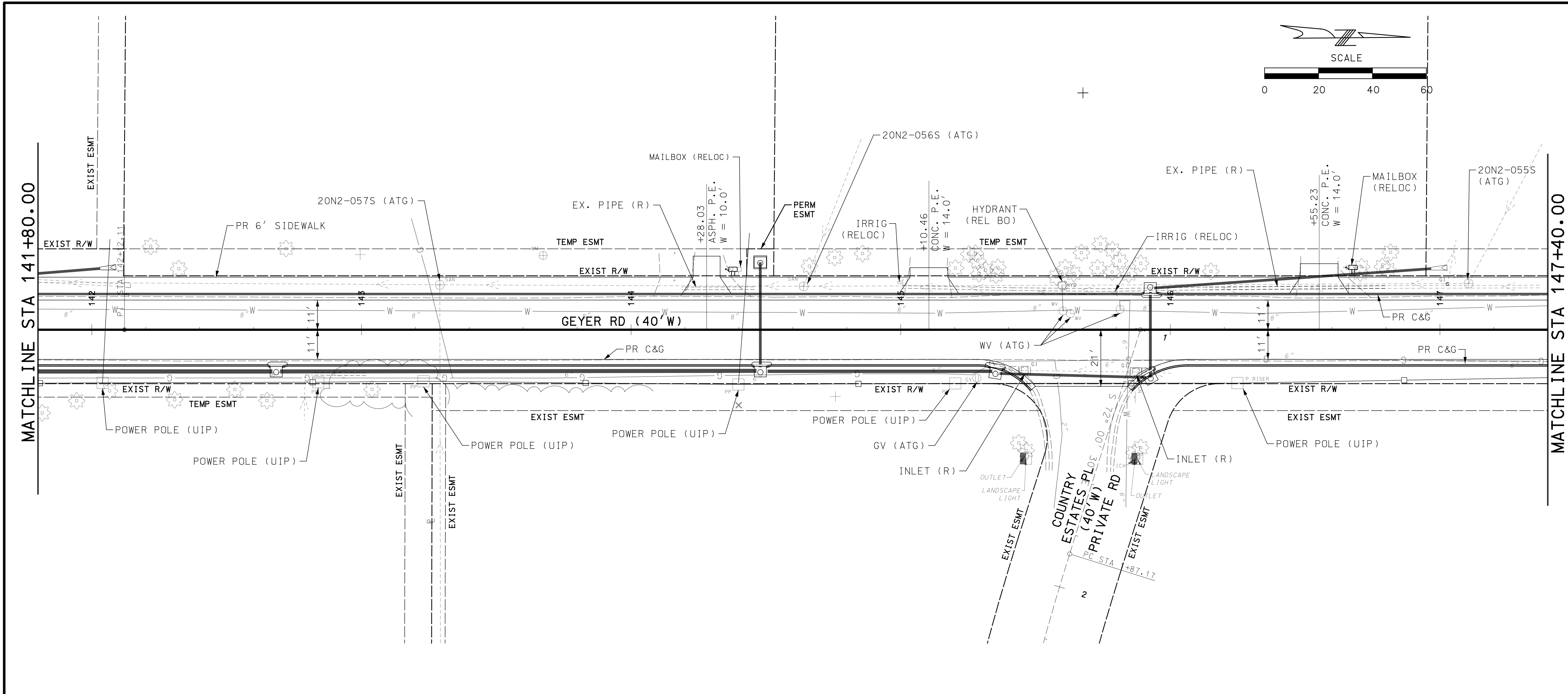
REV	DATE	BY	DESCRIPTION

LOCHMUELLER GROUP
 411 N 10TH STREET, SUITE 200
 SAINT LOUIS, MISSOURI 63101
 P (314) 621-3395 F (314) 621-3288
 WWW.LOCHMUELLERGROUP.COM
 MISSOURI STATE ENGINEERING CORPORATION
 CERTIFICATE/LICENSE NO. 2002011852

GEYER ROAD PHASE I IMPROVEMENTS
PLAN AND PROFILE
SHEET 6 OF 10

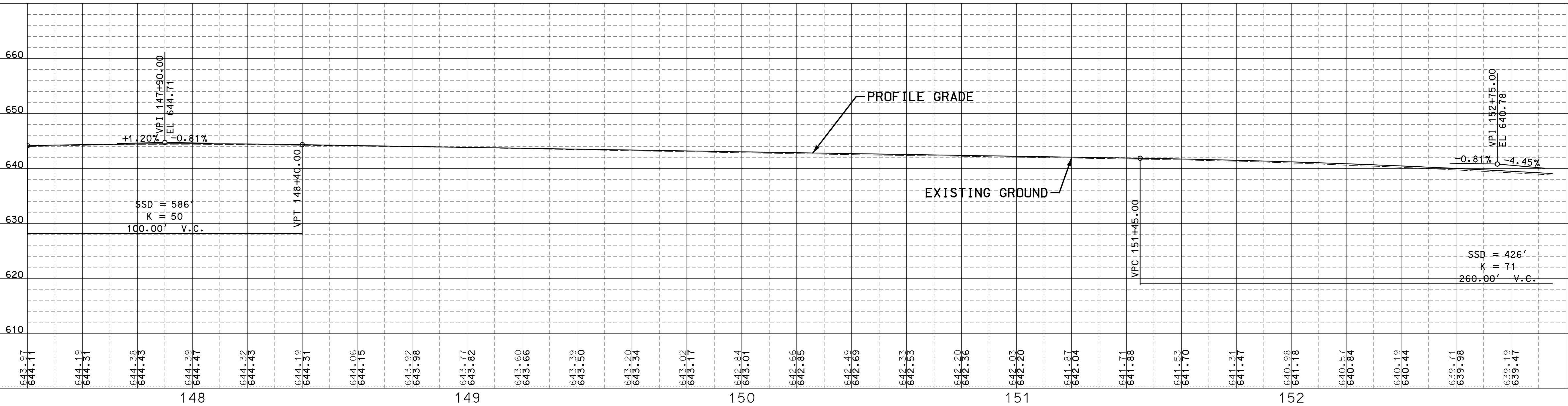
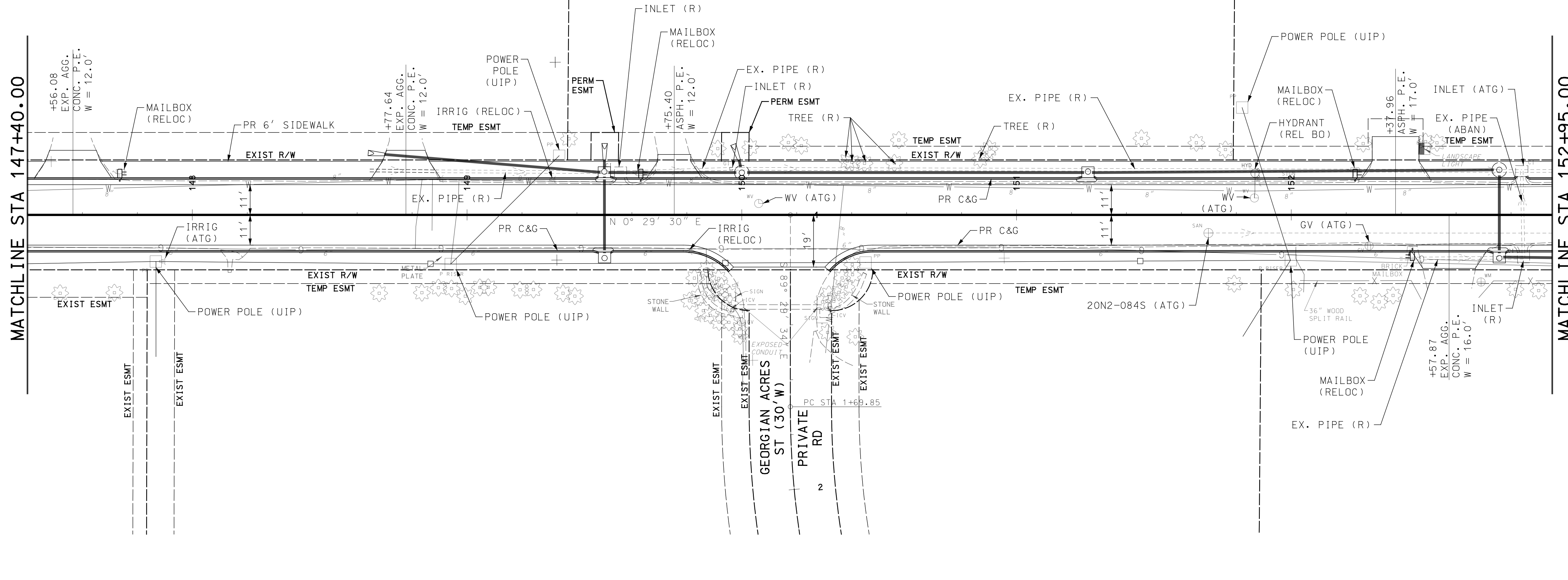
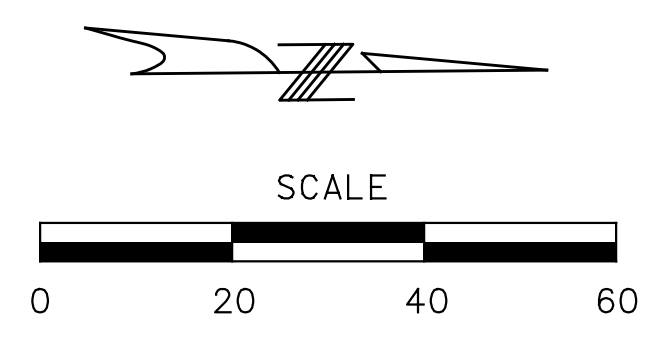
PROJECT/JOB NO.
STP-5503(607)
 MSD PROJECT NO.
 -

MSD BASE MAP
20N, 21N, 22N
 DATE PREPARED
7/16/2020
 SHEET
9 OF 14



MATCHLINE STA 147+40.00

MATCHLINE STA 152+95.00



PRELIMINARY PLANS
NOT FOR CONSTRUCTION
DATE

DISCLAIMER OF RESPONSIBILITY
I hereby specify that the documents intended to be authorized by my seal are limited to this sheet, and I hereby disclaim any responsibility for all other Drawings, Specifications, Estimates, Reports or other documents or instruments relating to or intended to be used for any part of the engineering project or survey.

REV	DATE	BY	DESCRIPTION

LOCHMUELLER GROUP
411 N 10TH STREET, SUITE 200
SAINT LOUIS, MISSOURI 63101
P (314) 621-3395 F (314) 621-3288
WWW.LOCHGROUP.COM
MISSOURI STATE ENGINEERING CORPORATION
CERTIFICATE/LICENSE NO. 2002011852

GEYER ROAD PHASE I IMPROVEMENTS
PLAN AND PROFILE
SHEET 7 OF 10

PROJECT/JOB NO.
STP-5503(607)
MSD PROJECT NO.
-
MSD BASE MAP
20N, 21N, 22N
DATE PREPARED
7/16/2020
SHEET
10 OF 14

PRELIMINARY PLANS

NOT FOR CONSTRUCTION

DATE

DISCLAIMER OF RESPONSIBILITY

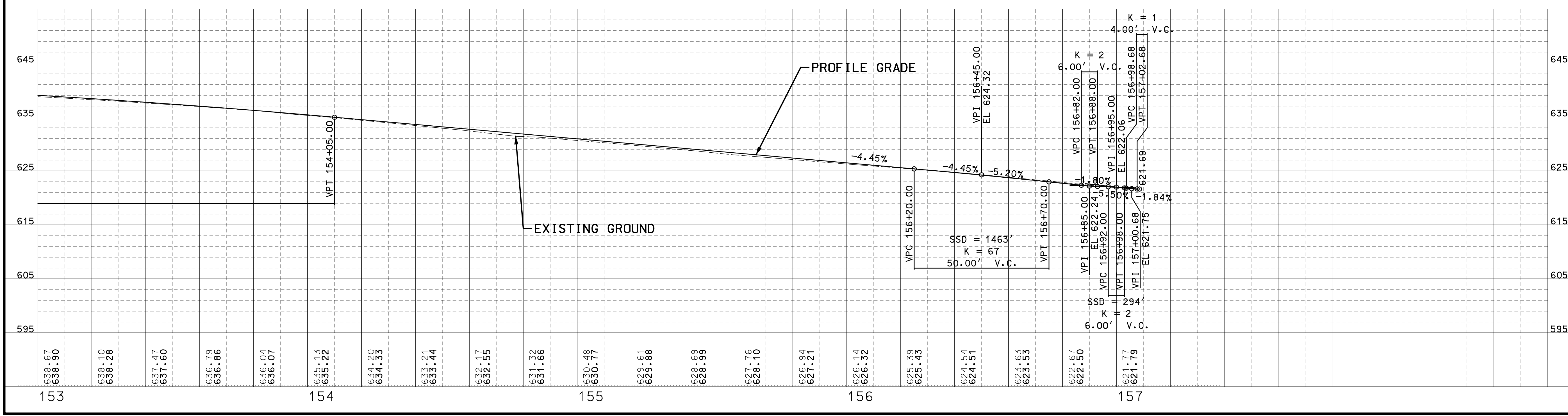
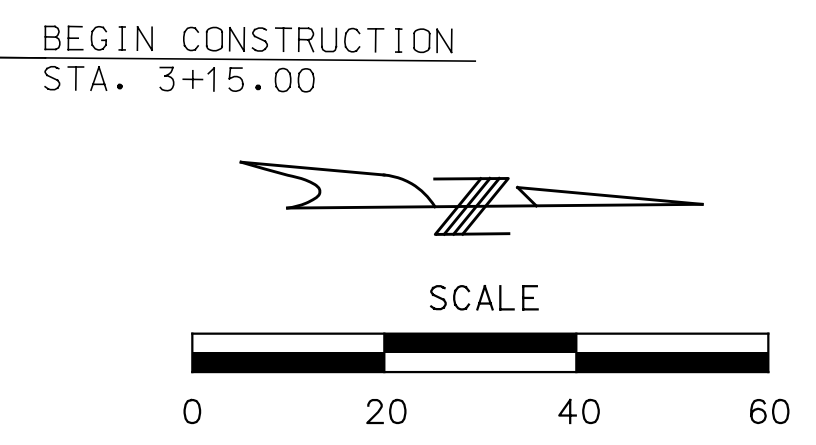
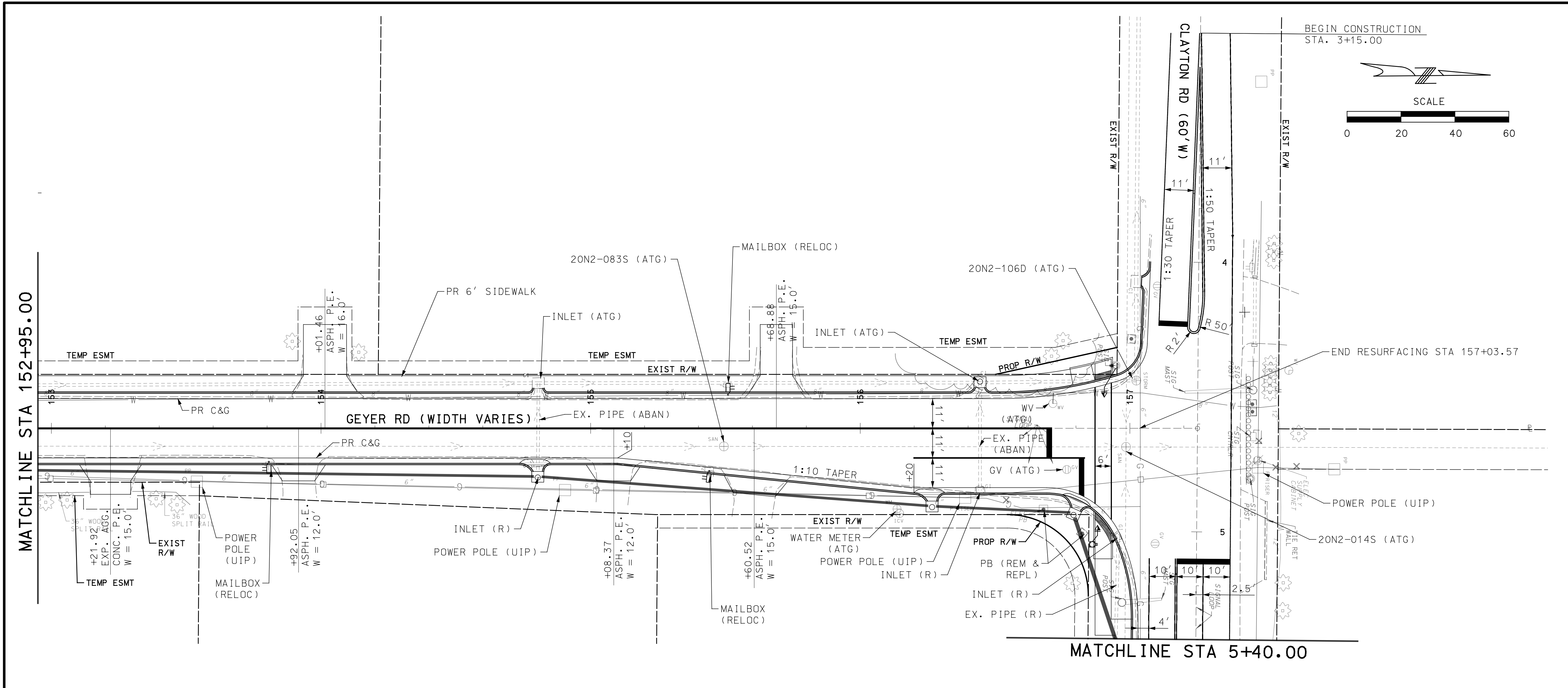
I hereby specify that the documents intended to be authorized by my seal are limited to this sheet, and I hereby disclaim any responsibility for all other Drawings, Specifications, Estimates, Reports or other documents or instruments relating to or intended to be used for any part of the engineering project or survey.

REV	DATE	BY	DESCRIPTION

LOCHMUELLER GROUP
 411 N 10TH STREET, SUITE 200
 SAINT LOUIS, MISSOURI 63101
 P (314) 621-3395 F (314) 621-3288
 WWW.LOCHMUELLERGROUP.COM
 MISSOURI STATE ENGINEERING CORPORATION
 CERTIFICATE/LICENSE NO. 2002011852

GEYER ROAD PHASE I IMPROVEMENTS
PLAN AND PROFILE
SHEET 8 OF 10

PROJECT/JOB NO. STP-5503(607)
MSD PROJECT NO. -
MSD BASE MAP 20N, 21N, 22N
DATE PREPARED 7/16/2020
SHEET 11 OF 14



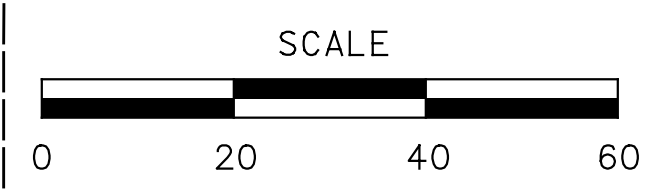
PRELIMINARY PLANS

NOT FOR CONSTRUCTION

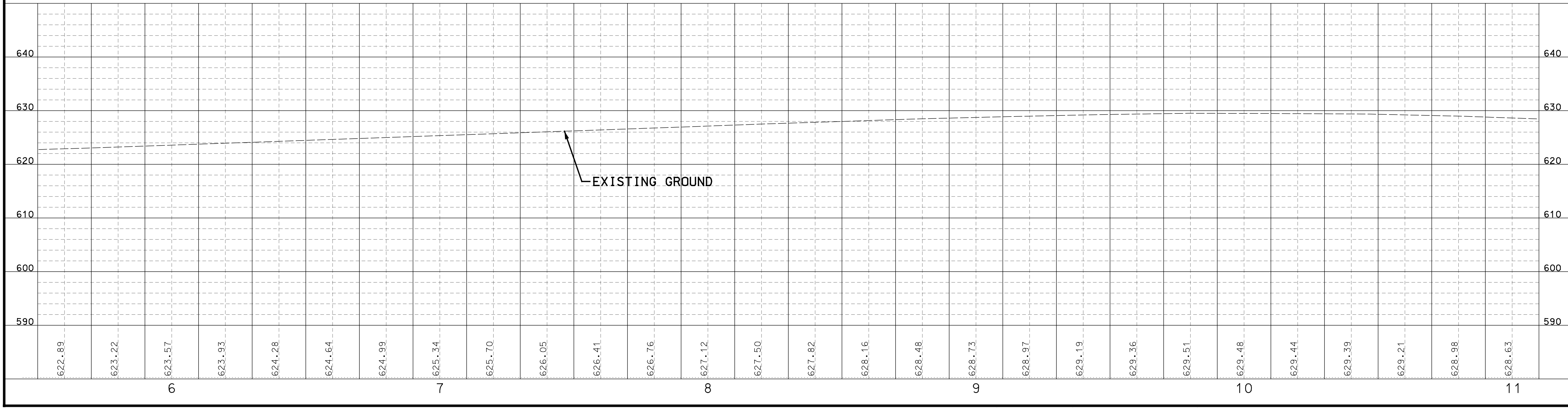
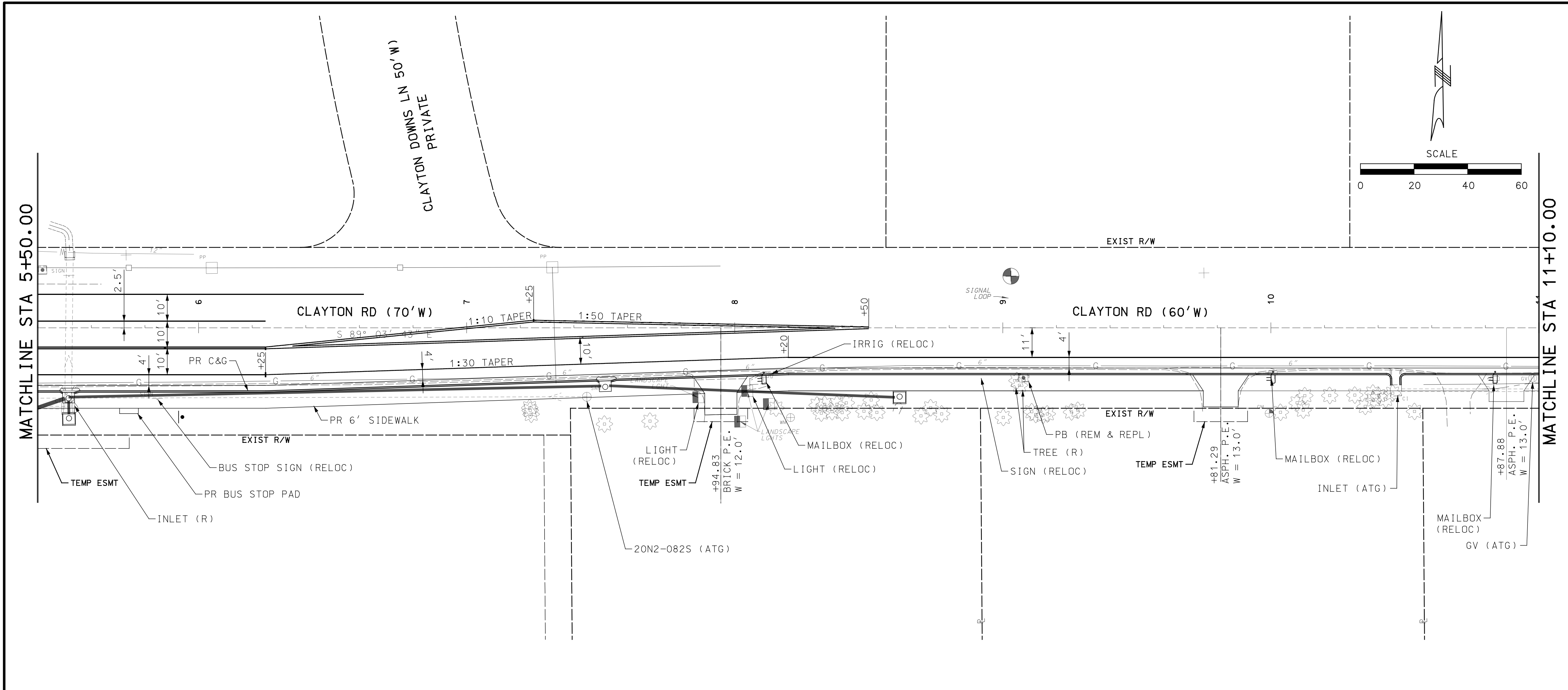
DATE

DISCLAIMER OF RESPONSIBILITY

I hereby specify that the documents intended to be authorized by my seal are limited to this sheet, and I hereby disclaim any responsibility for all other Drawings, Specifications, Estimates, Reports or other documents or instruments relating to or intended to be used for any part of the engineering project or survey.



SCALE

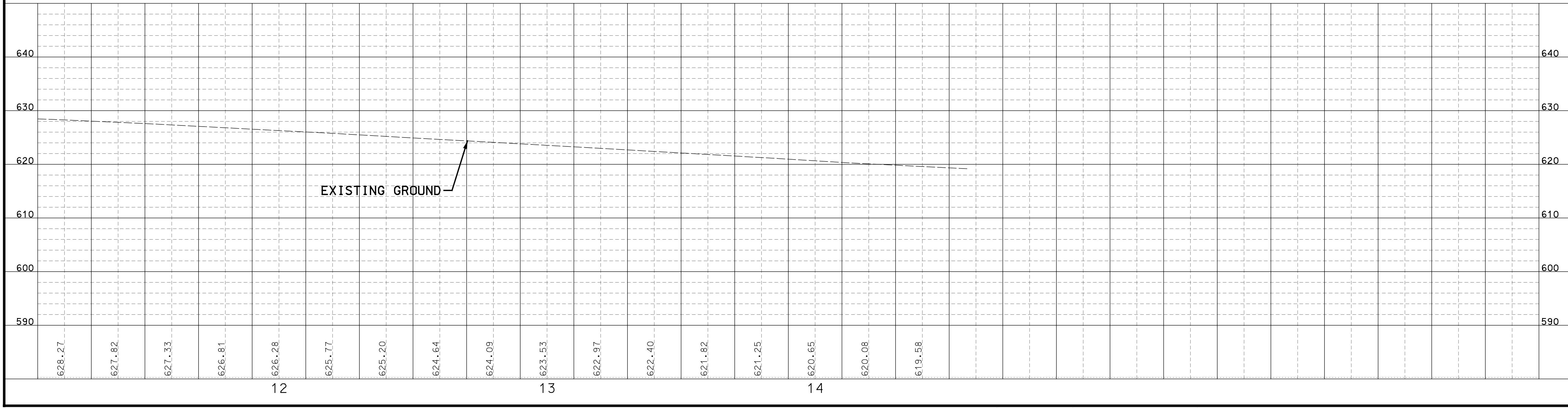
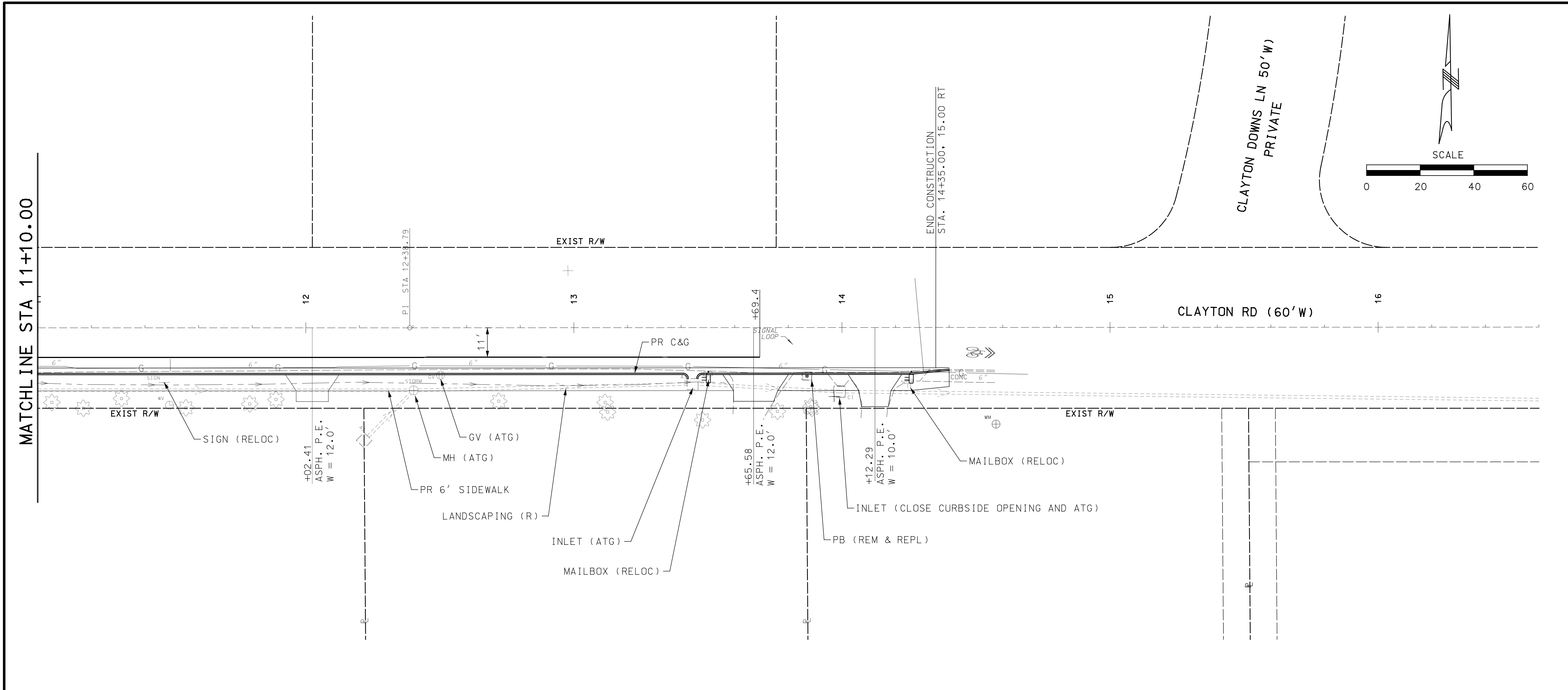


REV	DATE	BY	DESCRIPTION

LOCHMUELLER GROUP
 411 N 10TH STREET, SUITE 200
 SAINT LOUIS, MISSOURI 63101
 P (314) 621-3395 F (314) 621-3288
 WWW.LOCHMUELLERGROUP.COM
 MISSOURI STATE ENGINEERING CORPORATION
 CERTIFICATE/LICENSE NO. 2002011852

GEYER ROAD PHASE I
 IMPROVEMENTS
 PLAN AND PROFILE
 SHEET 9 OF 10

PROJECT/JOB NO. STP-5503(607)
MSD PROJECT NO. -
MSD BASE MAP 20N, 21N, 22N
DATE PREPARED 7/16/2020
SHEET 12 OF 14



PRELIMINARY PLANS

NOT FOR CONSTRUCTION

DATE _____

DISCLAIMER OF RESPONSIBILITY

I hereby specify that the documents intended to be authorized by my seal are limited to this sheet, and I hereby disclaim any responsibility for all other Drawings, Specifications, Estimates, Reports or other documents or instruments relating to or intended to be used for any part of the engineering project or survey.

REV	DATE	BY	DESCRIPTION

LOCHMUELLER GROUP

411 N 10TH STREET, SUITE 200
 SAINT LOUIS, MISSOURI 63101
 P (314) 621-3395 F (314) 621-3288
 WWW.LOCHGROUP.COM
 MISSOURI STATE ENGINEERING CORPORATION
 CERTIFICATE/LICENSE NO. 2002011852

GEYER ROAD PHASE I IMPROVEMENTS

PLAN AND PROFILE

SHEET 10 OF 10

PROJECT/JOB NO. **STP-5503(607)**

MSD PROJECT NO. _____

MSD BASE MAP **20N, 21N, 22N**

DATE PREPARED **7/16/2020**

SHEET **13** OF **14**

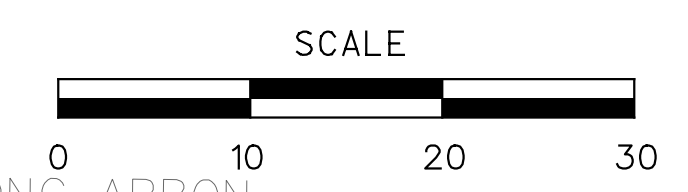
PRELIMINARY PLANS

NOT FOR CONSTRUCTION

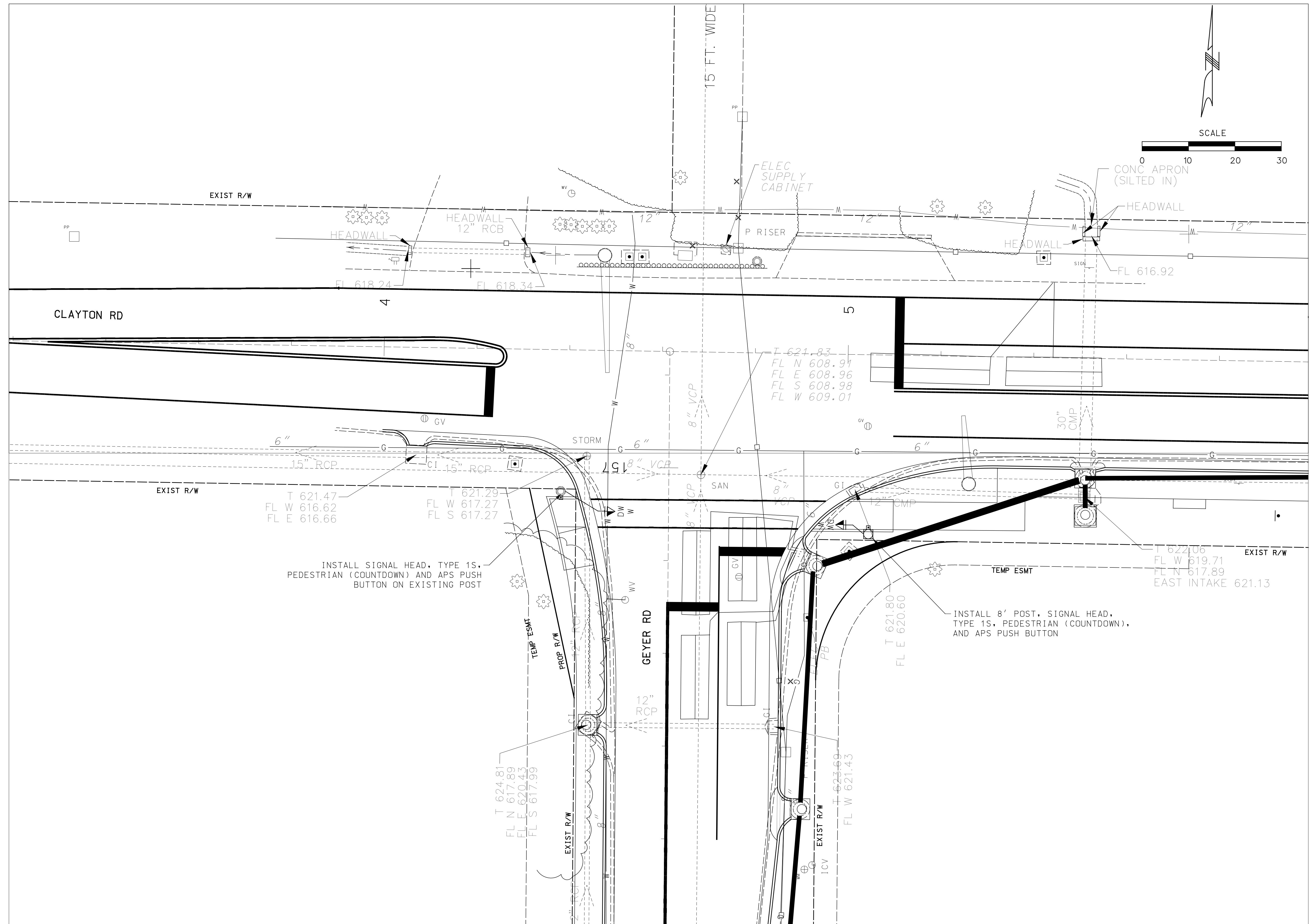
DATE

DISCLAIMER OF RESPONSIBILITY

I hereby specify that the documents intended to be authorized by my seal are limited to this sheet, and I hereby disclaim any responsibility for all other drawings, specifications, estimates, reports or other documents or instruments relating to or intended to be used for any part of the engineering project or survey.



SCALE



INSTALL SIGNAL HEAD, TYPE 1S, PEDESTRIAN (COUNTDOWN) AND APS PUSH BUTTON ON EXISTING POST

INSTALL 8' POST, SIGNAL HEAD, TYPE 1S, PEDESTRIAN (COUNTDOWN), AND APS PUSH BUTTON

REV	DATE	BY	DESCRIPTION

LOCHMUELLER GROUP
 411 N 10TH STREET, SUITE 200
 SAINT LOUIS, MISSOURI 63101
 P (314) 621-3395 F (314) 621-3288
 WWW.LOCHMUELLERGROUP.COM
 MISSOURI STATE ENGINEERING CORPORATION
 CERTIFICATE/LICENSE NO. 2002011852

GEYER ROAD PHASE I IMPROVEMENTS
 SIGNAL PLAN SHEET 1

PROJECT/JOB NO.
STP-5503(607)

MSD PROJECT NO.
 -

MSD BASE MAP
 20N, 21N, 22N

DATE PREPARED
 7/16/2020

SHEET
 14 OF 14